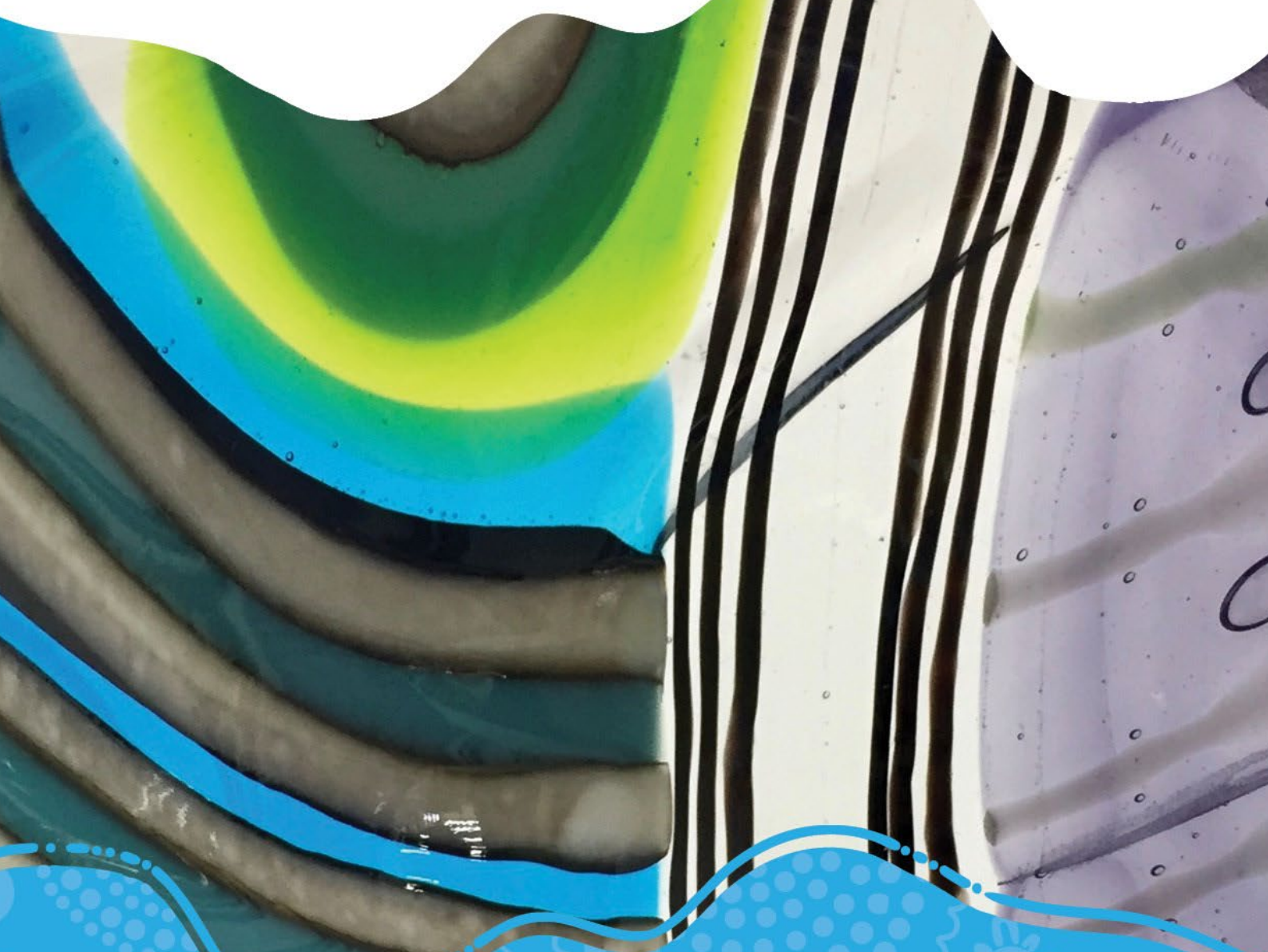




**Central
Regional**



Course **Pre-Enrolment Guide**

Training Area:

Transport and Logistics

Training Product:

TLI31222

Certificate III in Driving Operations

TLI31222 Certificate III in Driving Operations

Release number	R4.00
Required number of units for course completion	15
Course Duration	Full time– 2 years (Fenix Newhaul Traineeship)
Location/s	Geraldton Campus Technology Park
Delivery mode	<ul style="list-style-type: none"> • Traineeship - A work-based learning program where you must be aligned up as a trainee. You will work through learning materials at home and undertake activities in your workplace. • Recognition of Prior Learning - If you think you have existing experience, knowledge and skills in one or more of your units of study, you may apply for RPL. Should you apply for RPL, you will be supported through the process by a lecturer. For further information visit our website here.

Course Description

This is a qualification for those engaged in driving operation job roles within the transport and logistics industry.

It involves a defined range of skilled operations, usually within a range of broader related activities involving known routines, methods and procedures, with some discretion and judgement in selecting equipment, services or contingency measures and within known time constraints.

This qualification will give students the skills and knowledge to work safely in the road transport industry.

Course Considerations

Students must be employed by Fenix Newhaul and have a Training Contract registered with the WA DTWD Apprenticeship/Traineeship Office to enrol.

Physical capability:

- Operating vehicles and machinery
- Manual handling tasks
- Working in workshop and outdoor environments

Emotional and mental requirements:

- Working under operational time constraints
- Responding to emergency situations

Environmental requirements:

- Exposure to outdoor conditions
- Working around vehicles, machinery and transport environments

Cultural and Social aspects:

- Working in team environments
- Working within workplace compliance and safety frameworks

Course fees

For information about fees, refer to the Course Website.

[Courses | Central Regional Tafe](#)

Course Pathways

Pathways into the qualification:

There are no specific pathways into this qualification.

Pathways from this qualification:

- Certificate IV qualifications in the Transport and Logistics industry
- Industry entry

Job roles:

- Bus driver
- Coach driver
- Concrete agitator driver
- Line haul driver
- Pickup and delivery driver
- Pilot vehicle driver
- Tip truck driver
- Waste vehicle driver

Further details can be found on our website [here](#).

National/State Course Entry Requirements

Training Product Entry Requirements:

There are no entry requirements for this qualification.

State Entry Requirements:

- A Training Contract registered with the WA DTWD Apprenticeship/Traineeship Office must be in place prior to enrolment
- Students must be able to provide ID as per applicant guide issued by WorkSafe WA to obtain a Forklift Licence
- Students must have a valid Car (C class) licence to fulfil Department of Transport requirements to obtain a Heavy Rigid (HR) licence

Central Regional TAFE (CR TAFE) Entry Requirements

You must have a Unique Student Identifier (USI) to enrol in and complete any nationally recognised training in Australia. If you do not have a USI or need help getting one, we can assist you with the process.

Language, Literacy, Numeracy and Digital (LLND) Requirements

CR TAFE is required to review your language, literacy, numeracy and digital (LLND) skills to help you decide if the course is right for you, identify any support you might need, or whether other courses may be better suited to you at this time.

For this course, the method of LLND review will include:

- an interview with a CRTAFE staff member
- LLND quiz

Learning resources and equipment you need to bring

You are required to provide (at your own expense) the following list of resources/equipment:

Learning resources and equipment you need to bring

You are required to provide (at your own expense):

- Access to a PC or laptop
- Internet access
- Stationery
- PPE including:
 - steel cap boots,
 - long pants (cotton drill),
 - long-sleeved high-vis shirt
 - safety glasses, sun and noise protection, etc. as required

Students may also require access to:

- Industry-specific materials such as load restraint guides, logbooks, and safety documentation in the workplace.

Textbooks

Learning materials including Learner Guides and PowerPoints are provided.

Online learning materials

Learning materials will be provided via CR TAFE systems and include:

- Learner guides
- PowerPoints
- Online resources

Third Party Providers

In the delivery of this course, CR TAFE will work with another individual or organisation to provide training and/or assessment.

Desert 2 Coast Driver Trainers are training, assessing and providing the license to the students completing the TLIC3004 Drive a heavy rigid vehicle unit.

Upon successful completion CRTAFE will process a credit transfer for this unit prior to issuing the TLI31222 Certificate III in Driving Operations qualification.

Work Experience

This is a traineeship program. Training and assessment will take place primarily in the workplace.

Licensing/Registration Requirements that Apply on Completion

Successful achievement of licensing units must align with state or territory regulatory requirements.

Students are required to:

- Obtain a Heavy Rigid (HR) licence
- Complete forklift licensing requirements (where applicable)

Timetable and Training Hours

The timetable provided helps you plan your week and understand your study commitments. The timetable shows which days and times you need to attend training. It helps you plan ahead and manage your participation.

Training is delivered through a combination of:

- Workplace learning
- Block training

Block Structure:

- Four (4) two-week blocks (one per semester)
- Monday–Thursday: 8:00am – 4:30pm
- Friday: 8:00am – 12:00pm

In addition to structured training, learners will complete workplace-based activities.

TIME	MONDAY	TUESDAY	WEDNESDAY	THURSDAY	FRIDAY
8 :00 am- 12:00 pm	Block	Block	Block	Block	Block
12:00 pm - 12:45 pm LUNCH BREAK					
12:45 pm- 4:30 pm	Block	Block	Block	Block	

Assessment Methods

- Knowledge questions: This involves answering questions, either orally or in writing relating to the unit of competency.
- Observations: This involves your assessor or a third party (workplace supervisor) observing you perform tasks in the workplace and/or simulated workplace to check that you have the knowledge and skills required for the unit of competency.

Note: The specific assessments required for each unit of competency will be outlined in the Training and Assessment Plan (TAP) for that unit. You will receive a copy of the TAP for each unit when you enrol.

Further information

More information can be found in our Student Handbook, available for download off our website [here](#)

Contacts:

Portfolio Name: Transport and Logistics

Phone number: 1800 672 700

Email: enquiries@crtafe.wa.edu.au

Alternatively, you may contact the college on 1800 672 700

Or enquire via our website enquiry form [here](#):



RTO: 52789

 1800 672 700

 enquiries@crtafe.wa.edu.au

 centralregionaltafe.wa.edu.au



© 2026 Central Regional TAFE

All rights reserved. Except as permitted under the Copyright Act 1968 (Cth) and subsequent amendments, no part of this publication may be reproduced, adapted, amended, distributed, or transmitted in any form or by any means – including photocopying, recording, or other electronic or mechanical methods – without the prior written permission of Central Regional TAFE.

Central Regional TAFE is committed to developing high-quality resources that meet the needs of our customers. Every effort has been made to ensure this publication is free from errors or omissions. However, Central Regional TAFE accepts no responsibility or liability, whether in negligence or otherwise, for any loss, damage, or injury arising from the information contained within.