



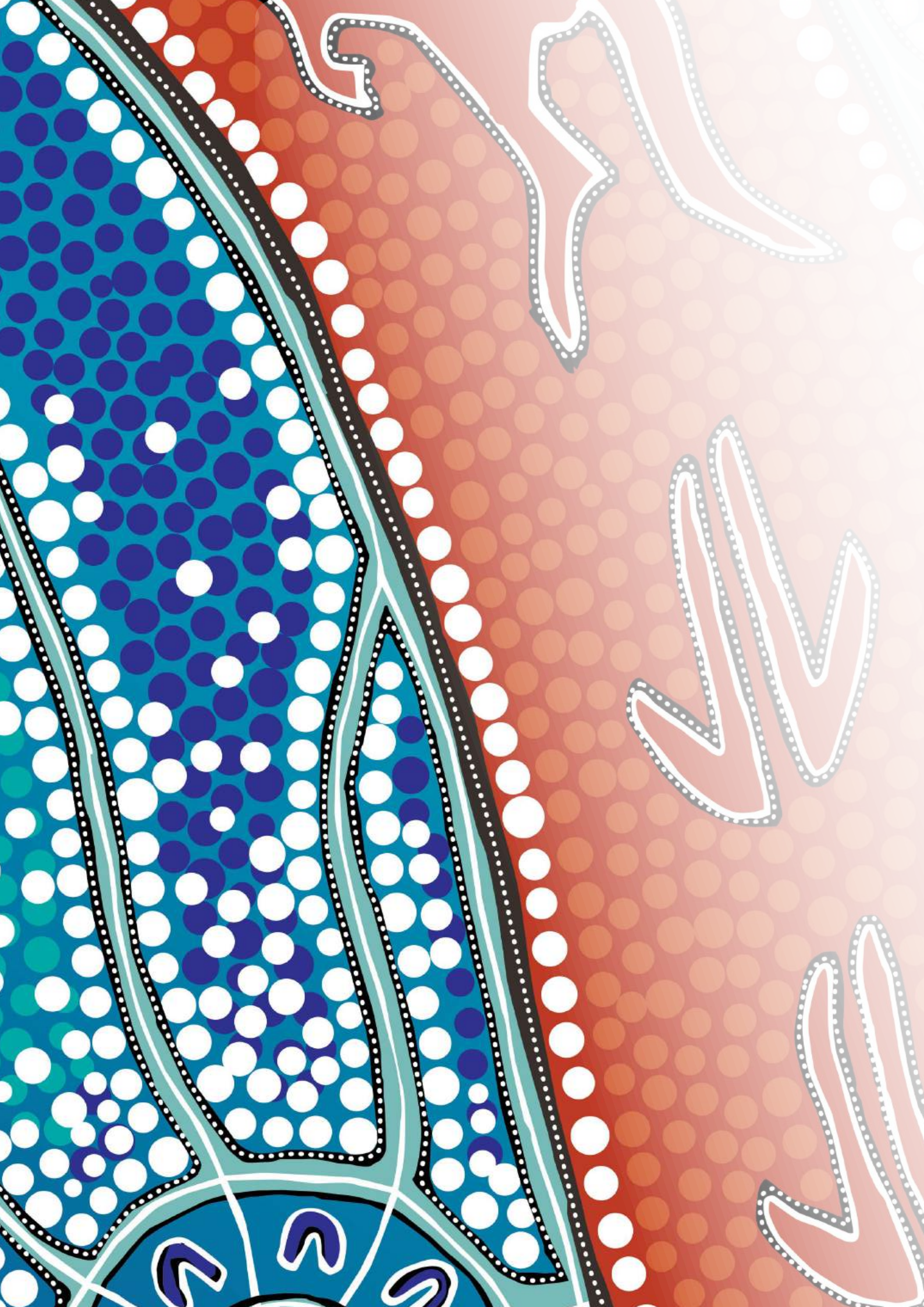
Central
Regional

MIDWEST EDITION

YOUR
CAREER
HERE

2027 CENTRAL REGIONAL TAFE

VETDSS
STUDY GUIDE



YOUR CAREER STARTS HERE.

Vocational Education and Training (VET) prepares you with the knowledge and skills you need in a rapidly evolving employment environment. At Central Regional TAFE it is our commitment to help you succeed in every way possible.

CONTENTS

Whoever You Want to Be	Page 4
Pathways	Page 6
About VETDSS	Page 8
Information for Students, Parents and Guardians	Page 10
VETDSS Higher Level Qualifications	Page 13
Pre-Apprenticeships in Schools (PATIS)	Page 31
VETDSS Certificate II Qualifications	Page 41
Contact	Back Page

DISCLAIMER

Course information and content contained in this document are correct at the time of printing. Commencement of courses is subject to funding, staffing and overall student interest. Course information is subject to change without notice.



VETDSS Student
Apprenticeship
Workplace Experience
RUSTY

TAFE
Central
Program

UAV PILOT

The stats don't lie.



89.3% of 2025 TAFE graduates in Australia were satisfied with their training.*



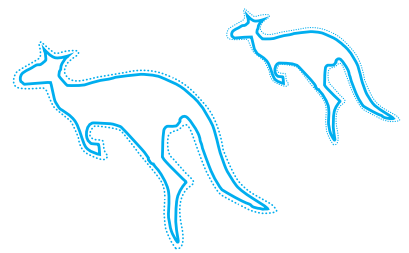
The majority of 2025 TAFE graduates were not only satisfied with their training, but gained employment after training as well.†



More than 90% of new jobs over the next decade will be in occupations requiring post-secondary qualifications.‡

*VET Student Outcomes, National Centre for Vocational Education Research, 2025
†Employment Projections - May 2025 to May 2035, Jobs and Skills Australia, 2025

Studying at Central Regional TAFE
means being supported in your
journey towards your
future career.



Did you know?

Central Regional TAFE's industry-experienced staff are dedicated to your success, helping you find a Vocational Education and Training Delivered to Secondary Students (VETDSS) pathway or Pre-Apprenticeships in School (PATIS) program that best suits you.

Working closely with industry partners and the community, we provide every opportunity for you to achieve your goals. This ensures our training is cutting edge, and our graduates are highly skilled and ready for tomorrow's workforce.

PATHWAYS

Whatever your career goal is, training at CR TAFE can help you get there, whether you are studying a Certificate, a Diploma qualification, or beyond.

Perhaps getting an apprenticeship or traineeship is your goal? By studying a VETDSS or PATiS qualification, you can have an advantage.

Even if you change your mind along the way, rest assured the time spent completing your vocational education and training was worth it.



VETDSS/PATiS

As a VETDSS or PATiS student, you can choose to study a:

- Certificate II
 - Certificate III or
 - Certificate IV
- or take on a Pre-Apprenticeship



EMPLOYMENT-BASED TRAINING

Following your VETDSS or PATiS course, you can either take on further study at a higher level, or you can choose to take on an apprenticeship or traineeship and complete training while getting on-the-job skills and knowledge.



FURTHER STUDY

Your options here are endless - take on further study in your chosen field or beyond, and at higher levels such as: Diploma, Advanced Diploma or Bachelor Degree (University)



EMPLOYMENT

Dive in and enter the workforce in the career you've trained for! You'll already have the skills, confidence, and experience employers are looking for.



VETDSS and PATiS Pathways are the perfect introduction into the world of work. Learn practical skills in Years 11 and 12 while gaining an insight into what to expect in the workplace. Success in your program can lead to employment or give you a head start in other nationally recognised qualifications. Some higher-level qualifications even offer pathways into higher education and university studies.

VOCATIONAL EDUCATION AND TRAINING (VET) DELIVERED TO SECONDARY STUDENTS

VETDSS courses are designed for students who are still at high school but would like to start working or studying in a specific field. You can complete full vocational qualifications which will contribute towards your WACE.

Vocational courses provide training options to progress into the world of work after high school and offer a different pathway to university, apprenticeships, traineeships and other higher qualifications.

For more information on how a VET qualification can be a unique and alternative pathway into university, scan the QR code below.

We work closely with regional secondary schools to offer a wide range of programs including Pre-Apprenticeships in Schools (PATiS) and higher qualifications.

PRE-APPRENTICESHIPS IN SCHOOLS (PATiS)

PATiS programs see students attend practical and theory-based training at CR TAFE for two (2) days per week where they are taught by qualified lecturers. Students are also required to participate in work placement which is an excellent opportunity for them to showcase their skills and work readiness to potential employers.

If you are in Year 11 or 12, the PATiS program involves attending school, completing Certificate II Pre-Apprenticeship training at CR TAFE, and completing work placements.

There is no doubt employers look favourably at the candidate who has a proven track record of study, demonstrated the capacity to apply themselves to a formal TAFE course and understands the practices and terminology associated with the trade in question.

Scan me for more info:



FEES AND CHARGES

Secondary school students participating in a VETDSS/PATiS program as part of their secondary education are exempt from course and resource fees. However, depending on the chosen course, students may be required to purchase protective clothing, uniforms, text books, student cards and equipment at their own cost.

Specific information regarding fees and charges (if required) will be outlined for each qualification.

HOW TO ENROL

Speak with your parent/guardian and visit our website to apply for your course online: www.centralregionaltafe.wa.edu.au/applications In addition to this, see your School VET Coordinator, who will assist you with your application form on your behalf.

Applicants are required to attach:

- Copies of most recent school reports;
- Letter of application; and
- Any supporting documentation (for example, work placement reports, references, awards).

When completing the application, ensure you have the support of your parent/guardian and your school.

DATES

All applications for 2027 programs must be

submitted via the CR TAFE website enrolment portal by 5:00pm on Friday, 21 August 2026.

APPLICATION REVIEW PROCESS

Depending on the course and individual circumstances, the review process may include activities such as an interview with a lecturer, consideration of school reports, submission of an application letter, completion of an online assessment, and recommendations from your school. Additional review activities such as aptitude tests may also be required

Successful students will be notified in Term Four and invited to attend an orientation session on campus in December 2026.

INDUCTION AND ATTENDANCE

The student orientation day provides students with further information about scheduled classes, activities and a chance to meet the lecturer and have a tour around campus.

Students are responsible for ensuring their attendance in class and notifying their lecturers if they are unable to attend or are running late.

Attendance is recorded and all absences are sent to parents via SMS message and communicated to the student's school on the same day. Repeated absences may result in a school being contacted regarding a student's continuation in the program.

INFORMATION FOR

CLASSROOM AND TAFE ENVIRONMENT

CR TAFE is an adult learning environment with a focus on developing skills and knowledge to the standard required in the workplace. This means:

- Students are responsible for their own learning and are expected to manage their workload, and seek assistance from lecturers when needed.
- Learning activities at CR TAFE are not limited to lessons in a classroom environment and may include: lectures, tutorials, online learning, work placements, assessments, research, project work, group work or workshops.
- Course hours include a wide range of delivery and assessment activities and may not always be used for classroom teaching.
- Students under 18 years of age share CR TAFE facilities such as the library, canteen, computer labs and ablution blocks with adult students.
- Some courses are delivered across more than one campus and/ or involve a workplace. Parents/guardians are responsible for their child's travel arrangements to and from the campus or workplace.
- Students may be required to complete assessment tasks/assignments outside of their scheduled timetable. Some of these assessment tasks/assignments are undertaken in the community.

SUPERVISION

While attending CR TAFE, students are under the supervision of their lecturer taking the class. Students will not be supervised during break times. Students are expected to remain within the College grounds unless they provide their lecturer with written notification from a parent or their school that they intend to leave the College earlier than the advertised class finish time.

EXCURSIONS

CR TAFE provides parents/guardians with information on excursions prior to the event. Written parental consent will be sought for students under 18 to participate in excursions away from CR TAFE premises. If parental consent is not given, your child will not be able to attend the excursion and CR TAFE will not provide an alternative supervised activity. Students may be required to make their own way to excursions. In these situations parents/guardians will be responsible for organising transport to and from excursions.



INFORMATION

HEALTH AND SAFETY

CR TAFE strives to provide an environment that supports the health and well-being of all students by:

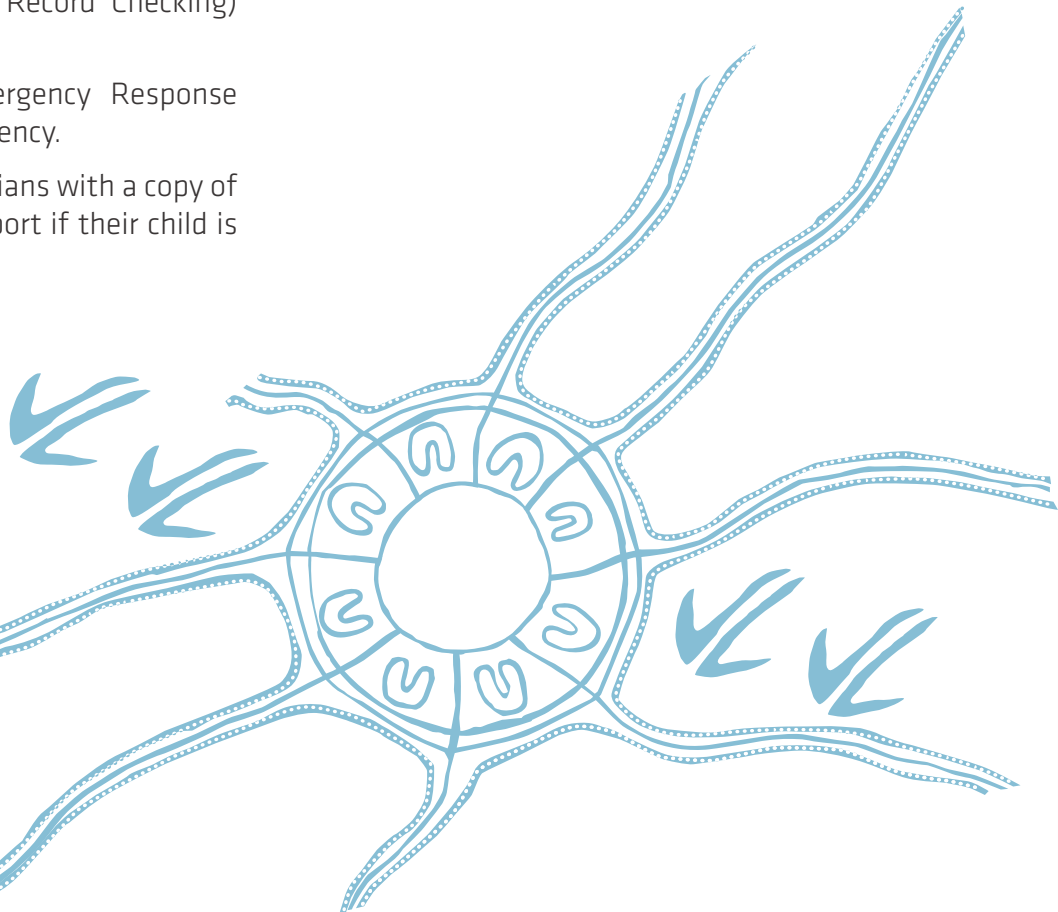
- Following the relevant WHS policy, guidelines and practices.
- Providing designated first-aid officers, available to students at all campuses.
- Providing assistance and if necessary, arranging for qualified medical personnel in case of an emergency.
- Promoting a friendly and inclusive environment where bullying or any form of harassment is not accepted. Any student experiencing bullying or harassment of any kind should inform a CR TAFE staff member immediately.
- Ensuring all relevant staff have a Working with Children Check subject to the Working with Children (Criminal Record Checking) Act 2004.
- Implementing the Emergency Response Plan in case of an emergency.
- Providing parents/guardians with a copy of an Accident/Incident report if their child is seriously injured.

INSURANCE

Students are not covered for Personal Accident or any loss or damage to property whilst on a CR TAFE campus. However, CR TAFE does hold cover with the Insurance Commission of WA (RiskCover) that provides Personal Accident and public liability cover for students who are undertaking approved unpaid work experience that is allocated or arranged by CR TAFE.

Personal Accident and public liability cover is also extended to those students attending any official College camp, excursion, trip or other off campus activity which is approved and organised by CR TAFE.

The responsibility is placed on parents/guardians in relation to whether they arrange their own Personal Accident insurance or private health cover for their child if they believe CR TAFE coverage is not adequate.





KEEP THAT COUGH UNDER COVER.

VETDSS HIGHER LEVEL QUALIFICATIONS





LABORATORY

MSL30122 Certificate III in Laboratory Skills

Would you like to get hands on experience as an environmental and/or laboratory technician?

Work both out in the field and in the laboratory and use cutting-edge testing equipment to process and record data.

This course will equip you with the knowledge and skills to perform roles such as a Laboratory or Environmental Technician for a variety of industries, including the mining sector, pathology labs, conservation

and land management, forensic labs, marine science and research institutes.

For those students looking for an alternative pathway to university, this program is an excellent and practical starting point.

CR TAFE offers post-school programs leading on from this qualification to help you gain entry to university with advanced standing.

COST	Uniform - \$50.00 (approx.).	DURATION	Three (3) term program, one (1) day per week.
UNIFORM REQUIREMENTS	CR TAFE student polo shirt (uniform). Enclosed shoes (safety boots), hat.	WORK PLACEMENT REQUIREMENTS	NIL.
CAREER OPPORTUNITIES	Employment outcomes targeted by this qualification include Laboratory Technician, Environmental Technician, Instrument Operator and similar personnel.	COURSE PATHWAYS	MSL40122 Certificate IV in Laboratory Techniques. MSS40222 Certificate IV in Environmental Monitoring and Technology.



VETDSS Student
Business
SCARLETT





BUSINESS

BSB30120 Certificate III in Business

Be in high demand with skills that could take you anywhere. Industry and government forecast a high demand for office workers, and with a Certificate III in Business, you will be ready to be recruited.

In this course you will learn skills and knowledge in basic MYOB, workplace organisation, customer service, workplace health and safety, desktop publishing, spreadsheets, creating electronic presentations and much more.

On completion you will be ideal for roles in

data entry, customer service, accounts or as an office clerk.

Gain skills in:

- Organising tasks
- Managing workplace information
- Producing business documents
- Delivering customer service
- Communicating effectively, and
- Fostering innovation and change.

COST	Uniform - \$50.00 (approx.).	DURATION	Three (3) terms, one (1) day per week.
UNIFORM REQUIREMENTS	CR TAFE student polo shirt (uniform).	WORK PLACEMENT REQUIREMENTS	NIL.
CAREER OPPORTUNITIES	Administration Assistant, Personal Assistant, Clerical Worker, Data Entry Operator, Information Desk Clerk, Office Receptionist.	COURSE PATHWAYS	BSB40120 Certificate IV in Business.





VISUAL ARTS

CUA31125 Certificate III in Visual Arts

Is working in the Arts your dream? Do you want to follow a study pathway directly into a visual arts degree?

In this qualification, you will learn how to use a range of skills and techniques to develop your ideas and create artwork.

Successful completion enables progression directly into the CUA51125 Diploma of Visual Arts offered at CR TAFE (with portfolio

submission and interview).

With a diploma, you can choose to study at an Advanced Diploma level at CR TAFE or have a direct study pathway to a degree in Visual Arts at Edith Cowan University.

This is an alternative to an ATAR pathway for students to obtain a degree in the creative arts industry.

COST	NIL.	DURATION	Three (3) terms, one (1) day per week.
UNIFORM REQUIREMENTS	Enclosed shoes. Apron.	WORK PLACEMENT REQUIREMENTS	NIL.
CAREER OPPORTUNITIES	Art Practitioner, Art Gallery Technician, Art Technician. The Visual Arts offers employment in a variety of settings including schools, technical colleges, universities, galleries, shop-fronts, privately operated creative industries, home businesses and community precincts.	COURSE PATHWAYS	CUA51125 Diploma of Visual Arts. CUA60725 Advanced Diploma of Visual Arts.



VETDSS Student
Early Childhood
Education and Care
CHARLOTTE

VETDSS Student
Early Childhood
Education and
Care
MEG

TAFE
Western Australia





EDUCATION

CHC30125 Certificate III in Early Childhood Education and Care

If you are looking to work in the exciting and rewarding children’s services industry, then this nationally recognised qualification is for you.

This qualification will give you industry exposure and a strong theoretical and practical foundation, ensuring you achieve the high levels of professionalism needed to excel in the childcare industry.

Gain skills in caring for children, applying health and hygiene principles, understanding legal and ethical requirements, providing nutritional needs for babies and children, developing and implementing play experiences, understanding child development stages, working with families and working effectively in a team environment.

Upon successful completion of CHC30125 Certificate III in Early Childhood Education and Care, you will be eligible to enrol into the CHC50125 Diploma of Early Childhood Education and Care. This program is also an alternative pathway to university.

COST	Texts: Birth to Big School 6th Ed. – Working in Children’s Services, Karen Kearns. The Big Picture 6th Ed. – Working in Children’s Services, Karen Kearns. \$146.20 (for the set of two). Uniform - \$50.00 (approx.).	DURATION	Two (2) year program, two (2) days per week. One (1) day work placement (starting Term 2). One (1) day at CR TAFE.
UNIFORM REQUIREMENTS	CR TAFE student polo shirt (uniform).	WORK PLACEMENT REQUIREMENTS	In this course, students will be required to attend one (1) day a week of placement at an Early Childhood Education and Care Service. 160 hours required.
CAREER OPPORTUNITIES	Early Childhood Educator, Family Daycare Educator and Nanny.	COURSE PATHWAYS	CHC50125 Diploma of Early Childhood Education and Care.



VETDSS Student
Education Support
ROSALIE

TAFE WA
Central
Regional



CHC30225 Certificate III in School Based Education Support

This course will provide you with a customised program in learning support to prepare you for your role as an education assistant working in a school. You will learn to provide support to a classroom teacher for children from pre-primary to Year 12.

As part of this qualification, you will undertake a supervised work placement where you will be able to apply the skills and knowledge you have learned in a classroom setting.

During this course you will learn how to:

- Implement planned education programs
- Assist students in their learning and development
- Contribute to the safety and health of students
- Support students with additional needs
- Work effectively with culturally diverse students and colleagues.

COST	Uniform - \$50.00 (approx.).	DURATION	Two (2) year program, two (2) days per week.
UNIFORM REQUIREMENTS	CR TAFE student polo shirt (uniform). Enclosed shoes.	WORK PLACEMENT REQUIREMENTS	Minimum 100 hours.
CAREER OPPORTUNITIES	Successful completion of this qualification provides you with the opportunity to become an education support assistant working with students in mainstream classrooms and students with additional needs.	COURSE PATHWAYS	CHC40225 Certificate IV in School Based Education Support.



ALLIED HEALTH

HLT33021 Certificate III in Allied Health Assistance

Does a future in Allied health services interest you? Join this growing sector and assist allied health professionals. Specialisation areas include dietetics, occupational therapy, physiotherapy, speech therapy, or podiatry services.

This qualification also equips you with the communications skills to work in health and community services.

Learn skills in:

- Assisting clients with movement
- Interpret and apply medical technology
- Assist with an Allied Health Program.

Some vaccinations may be required depending on your placement agency. For example, Influenza vaccination plus other vaccinations or screening as required.

COST	Uniform - \$50.00 (approx.).	DURATION	Two (2) year program, one (1) day per week.
UNIFORM REQUIREMENTS	CR TAFE student polo shirt (uniform).	WORK PLACEMENT REQUIREMENTS	120 hours.
CAREER OPPORTUNITIES	Allied Health Assistant, Personal Care Assistant.	COURSE PATHWAYS	52895WA Preparation for Health and Nursing Studies. HLT43021 Certificate IV in Allied Health Assistance, Physiotherapy/ Occupational Therapy.



52895WA Certificate IV in
Preparation for Health and Nursing Studies

This course is designed to give students wanting to enter a nursing and health program a competitive edge.

Gain the knowledge and skills to transition into studying at a Diploma level in the future. This course will develop your knowledge in anatomy and physiology, microbiology, medical terminology, applied mathematics, physics and chemistry.

Successful completion of this course will provide a great pathway into HLT54121 Diploma of Nursing and other health programs.

Please note: there are additional requirements for entrance into the HLT54121 Diploma of Nursing qualification. Refer to the course information for the Diploma of Nursing on the CR TAFE website for more information.

COST	Uniform \$50.00 (approx.).	DURATION	Year 12: One (1) year program, two (2) days per week. Year 11: Two (2) year program, one (1) day per week.
UNIFORM REQUIREMENTS	CR TAFE student polo shirt (uniform).	WORK PLACEMENT REQUIREMENTS	NIL.
CAREER OPPORTUNITIES	Prepare for a career in health or nursing related occupations (after further study).	COURSE PATHWAYS	HLT54121 Diploma of Nursing. HLT52021 Diploma of Remedial Massage.



AQUACULTURE

SFI30119 Certificate III in Aquaculture

Further your knowledge and passion for marine species. This qualification is suitable for those wanting to rise through the ranks and become leading hands and supervisors within the aquaculture industry.

Once qualified and working in a leadership role you will be responsible for decision making and coordinating team activities such as feeding, construction, managing live feeds and overseeing water quality monitoring.

You will gain knowledge and skills in:

- Coordinating fish farming activities
- Monitoring and implementing emergency and safety procedures
- Controlling pests, predators and disease
- Handling food
- Handling and harvesting stock
- Maintaining water environments
- Applying chemicals and biological agents.

COST	Uniform – \$50.00 (approx.).	DURATION	Three (3) terms, one (1) day a week.
UNIFORM REQUIREMENTS	CR TAFE student polo shirt (uniform).	WORK PLACEMENT REQUIREMENTS	NIL.
CAREER OPPORTUNITIES	Aquaculture Technician, Field or Fisheries Officer, Fish Farm Operations Manager, Nursery Assistant.	COURSE PATHWAYS	MAR20324 Certificate II in Maritime Operations (Coxswain Grade 1 Near Coastal). SFI50119 Diploma of Aquaculture

Please note: To be eligible for this course, students need to have successfully completed SFI20119 Certificate II in Aquaculture.



ANIMAL CARE

ACM30122 Certificate III in Animal Care Services

Turn your passion for animals into a career with this hands-on course, and learn from experienced lecturers dedicated to high standards of animal welfare.

This nationally recognised and accredited qualification is a ideal for those considering veterinary nursing or even studying to become a vet, or if you're serious about a career in animal care or welfare.

During this course, you will develop skills in:

- Caring for a range of animal species, including dogs, rodents, rabbits, birds, fish and reptiles safely and confidently
- Providing animal first aid
- Walking and bathing dogs
- Grooming according to breed and coat

COST	Uniform - \$50.00 (approx.).	DURATION	Three (3) term program, two (2) days per week.
UNIFORM REQUIREMENTS	CR TAFE student polo shirt, enclosed (non-slip) shoes and suitable clothing and hat for regular field activities.	WORK PLACEMENT REQUIREMENTS	NIL.
CAREER OPPORTUNITIES	Completing this qualification will give you the skills for a broad range of roles in the animal care industry, such as Animal Care, Pet Grooming, Dog Daycare, Pet Boarding, Dog Walking, Pet Sitting, Rescue Shelters, Breeding Establishments.	COURSE PATHWAYS	ACM40418 Certificate IV in Veterinary Nursing

Please note: To be eligible for this course, students need to have successfully completed ACM20121 Certificate II in Animal Care.



SCREEN AND MEDIA

CUA31020 Certificate III in Screen and Media

Turn your passion for music into a career with this hands-on course. Develop your songwriting, performance and production skills while learning from experienced lecturers in a supportive, creative environment.

Explore current industry technology and build a strong foundation for further study or pathways into the music industry.

In this course you will:

- Discover the process of creating and producing music
- Write and develop original material
- Create professional-quality recordings

COST	Non mandatory uniform - \$50.00 (approx.).	DURATION	Three (3) term program, one (1) day per week.
UNIFORM REQUIREMENTS	Uniform is non mandatory. Closed-in shoes. Students are encouraged to bring in their own headphones with quarter-inch jack or adapter.	WORK PLACEMENT REQUIREMENTS	NIL.
CAREER OPPORTUNITIES	Students who complete this course can go into a wide range of roles, including Independent Musician, Producer, Recording Engineer, Songwriter, Live Sound Engineer, Stage Technician and more.	COURSE PATHWAYS	ICT40120 Certificate IV in Information Technology

Please note: To get the most out of this course, it is recommended that students consider taking on individual instrumental lessons outside of CR TAFE. Please contact the lecturer directly for more information.



INFORMATION TECHNOLOGY

ICT30120 Certificate III in Information Technology

Information technology is one of the fastest-growing sectors in today's society and there is a high demand for skills across business, government and more.

In this course, you will sample a broad range of IT areas, from commonly used hardware and software to creating a website and 2D animation and 3D modelling.

Gain skills in:

- Software applications such as Adobe Photoshop, Animate and Dreamweaver and Autodesk's 3DS Max
- Web development (HTML & CSS)
- Introductory programming (JavaScript)
- Basic cyber security procedures and techniques
- Providing technical support.

COST	Uniform - \$50.00 (approx.).	DURATION	Two (2) year program, one (1) day per week.
UNIFORM REQUIREMENTS	CR TAFE student polo shirt (uniform). Enclosed shoes.	WORK PLACEMENT REQUIREMENTS	NIL.
CAREER OPPORTUNITIES	Students who complete this course can apply for roles in Web Development and Multimedia such as Client Support Officer, IT Technician, ICT Operations Support, Web Developer etc.	COURSE PATHWAYS	ICT40120 Certificate IV in Information Technology ICT50220 Diploma of Information Technology.





**PRE-APPRENTICESHIPS
IN SCHOOLS (PATIS)**



ELANGU

TAFE Central Regional





SIT20421 - AD84 Certificate II in
Cookery (Commercial Cookery Pre-Apprenticeship)

Get yourself Apprenticeship ready! This qualification reflects the role of individuals working in kitchens who use a defined and limited range of food preparation and cookery skills to prepare food and menu items. They are involved in mainly routine and repetitive tasks and work under direct supervision.

This qualification provides a pathway to work in kitchen operations in organisations such as restaurants, hotels, catering operations, clubs, pubs, cafés, and coffee shops; and institutions such as aged care facilities, hospitals, prisons, and schools.

UNIFORM REQUIREMENTS*

You are required to bring some of your own equipment (Chef's kit) and your own uniform for this course. Your uniform and chef's kit must include the following:

Chef's Kit:

- Chef's knife (suggested size 21 cm)
- Paring knife
- Peeler
- Plastic bowl scraper (Baker's helper)
- Sharpening steel
- Tool bag, knife roll or toolbox for equipment (ideally lockable).

Uniform:

- Apron, full bib
- Chef's black flat cap
- Closed in boots/shoes with safety toe, ideally slip resistant and water resistant/proof
- Full length pants
- Chef's jacket, short or long sleeve.

*These items can be found locally for purchase at Total Uniforms, 2B Jensen St, Geraldton WA 6530 (as of December 2022).

Please note: An aptitude test is required for this course.

COST	\$TBC
DURATION	One (1) year program, two (2) days per week.
WORK PLACEMENT REQUIREMENTS	150 hours
CAREER OPPORTUNITIES	Café Attendant, Catering Assistant, Chef.
COURSE PATHWAYS	SIT30821 Certificate III in Commercial Cookery. SIT31021 Certificate III in Patisserie. SIT50422 Diploma of Hospitality Management.

AUTOMOTIVE



Automotive Servicing Technology (Light Vehicle Servicing Pre-Apprenticeship)

If you want to work with cars and trucks as a career, this course is the one for you. Learn how to service engines, use and maintain workplace tools and equipment, and much more.

You will also have the opportunity to test your skills in the workplace through a Supervised Work Placement during the course.

Upon successful completion, you may look towards an Apprenticeship in a range of areas including: Motor Mechanic (Light), Heavy Duty Road Transport, Mobile Plant, Auto Electrician or Panel Beater.

Gain skills in:

- Communicating effectively
- Working in a team environment
- Planning, organising and problem solving skills
- Servicing a vehicle
- Performing general vehicle maintenance and small repairs.

<p>COST</p>	<p>Uniform - Approx. \$250. Text Book - <i>May Simpson Automotive Mechanics</i>, \$200 EST. Available at the CR TAFE Library.</p>	<p>DURATION</p>	<p>One (1) year program, two (2) days per week. Three (3) terms and work placement.</p>
<p>UNIFORM REQUIREMENTS</p>	<p>Long drill trousers (navy blue) and long sleeved drill shirt (hi-vis yellow & blue). Steel capped boots that comply with Australian Safety Standards. Safety glasses (first pair supplied by CR TAFE).</p>	<p>WORK PLACEMENT REQUIREMENTS</p>	<p>150 hours.</p>
<p>CAREER OPPORTUNITIES</p>	<p>Successful completion of this qualification may lead to employment as an Automotive Apprentice in any of the following industries:</p> <ul style="list-style-type: none"> • Light Vehicle • Heavy Vehicle • Mobile Plant Mechanic • Agricultural Mechanic • Spray Painter • Panel Beater • Automotive Electrician. 	<p>COURSE PATHWAYS</p>	<p>Automotive Apprenticeship.</p>

Please note: An aptitude test is required for this course.



ELECTRO-TECHNOLOGY

UEE22025 - AF02 Certificate II in

Electrotechnology (Career Start) (Electrotechnology Pre-Apprenticeship)

An Electrotechnology Pre-Apprenticeship prepares you for an apprenticeship in the electrical, instrumentation or electrical servicing trades

You will gain the knowledge and practical skills to work effectively in the construction industry, use hand and power tools, interpret drawings, take electrical and electronic measurements and soldering components.

Gain skills in basic electrical tasks such as:

- Basic electrical maintenance, such as attaching wall mounted electrical outlets
- Using hand and power tools
- Solving problems in DC circuits
- Working safely in an electrical workplace.

COST	<p>Toolkit \$153.91. Electrical Licence \$90 Uniform costs: Approx \$92. First aid certificate: Approx \$50.</p>	DURATION	Two (2) days per week, for three (3) terms.
UNIFORM REQUIREMENTS	<p>Long or short drill trousers (navy blue) and short (or long) sleeved drill shirt (navy blue). Steel capped boots that comply with Australian Safety Standards. Safety glasses (first pair provided).</p>	WORK PLACEMENT REQUIREMENTS	120 hours external industry placement, plus 30 hours at CR TAFE.
CAREER OPPORTUNITIES	Successful completion of this qualification provides you with the opportunity to gain an apprenticeship in the Electrical trade and other trades within the building and construction industry.	COURSE PATHWAYS	<p>UEE30820 Certificate III in Electrotechnology Electrician. Apprenticeship.</p>

Please note: An aptitude test is required for this course.



52887WA - AC56 Certificate II in
Plumbing (Plumbing Pre-Apprenticeship)*

Tap into your future! Plumbing is one of the top three occupations in the construction industry, with both general and specialised plumbers in demand. Build the basic skills and knowledge you need to start your plumbing career.

This entry-level course will put you on the path to gaining an apprenticeship in plumbing. This course is an excellent opportunity to gain the skills to impress possible future employers.

Gain skills in:

- Work safely in the construction industry
- Work with scaffolding
- Read plans and calculate quantities
- Use power and hand tools
- Weld using oxy-acetylene equipment
- Use laser levelling equipment.

COST	Uniform - Approx \$110. First aid certificate - Approx \$50.	DURATION	Two (2) days per week, over three (3) terms.
UNIFORM REQUIREMENTS	Long or short drill trousers (Navy) and long-sleeved drill shirt (Mid blue and Navy). Steel capped boots that comply with Australian Safety Standards. Safety glasses (first pair provided).	WORK PLACEMENT REQUIREMENTS	120 hours of external industry placement, plus 30 hours at CR TAFE.
CAREER OPPORTUNITIES	On completion of this course, you may be able to specialise in different areas of plumbing including: Domestic Plumber, Industrial Plumber, Gasfitter, Mechanical Services Plumber, Roof Plumber, Sprinkler Fitter.	COURSE PATHWAYS	CPC32420 Certificate III in Plumbing.

* This course will be in transition after 31 August 2026, and the course code is subject to change.
Please note: An aptitude test is required for this course.





BUILDING & CONSTRUCTION

52893WA - AD12 Certificate II in

Building and Construction (Pathway-Trades) (Carpentry Pre-Apprenticeship)

When you complete a Certificate II in Building and Construction (Pathway-Trades) (Carpentry Pre-Apprenticeship), you can seek an apprenticeship in the building and construction industry in your chosen trade stream and gain credit towards an apprenticeship for completed subjects.

The first stage of the course has units common to several construction trades, providing a great introduction to the industry, its culture, occupations, job roles and workplace expectations.

The elective units of competency are carpentry based, covering Work Health and

Safety requirements, the industrial and work organisation structure, communication skills, work planning, and the basic use of tools and materials. You will gain full industry experience whilst on work placement.

Develop skills in:

- General construction techniques
- Working as part of a team
- Work safely in the construction industry
- Using a variety of construction tools and equipment.

COST	Uniform - Approx. \$110.	DURATION	Two (2) days per week for three (3) terms.
UNIFORM REQUIREMENTS	Long or short drill trousers (navy blue) and long or short-sleeved drill shirt (yellow and navy). Steel capped boots that comply with Australian Safety Standards. Safety glasses (first pair supplied by CR TAFE).	WORK PLACEMENT REQUIREMENTS	120 hours of external industry placement plus 30 hours at CR TAFE.
CAREER OPPORTUNITIES	On completion of this course, you may be able to pursue entry-level employment or an apprenticeship pathway in carpentry and construction, including roles such as Trade Assistant, Construction Labourer, Carpenter's Assistant, Formwork Assistant, or General Construction Worker.	COURSE PATHWAYS	CPC30220 Certificate III in Carpentry.

Please note: An aptitude test is required for this course.



MASTER CLASS
438368

Central
Regional



VETDSS CERTIFICATE II QUALIFICATIONS

Animal Care

If you love working with animals, whether furry or feathered, this nationally recognised qualification provides the foundational skills and knowledge needed for entry-level roles in the animal care industry.

Students will learn practical skills and techniques in a variety of environments, including at the CR TAFE Animal Clinic at our Fitzgerald Street Campus.

This hands-on course involves physical work such as lifting, bending and working outdoors in a variety of conditions.

During this course, you will develop skills in:

- **Animal Care Fundamentals:** Learn essential techniques for feeding, watering, and maintaining hygiene routines to a range of animals.
- **Health and Wellbeing:** Assist in basic health care, including administering treatments to a range of animals.
- **Safe Handling Practices:** Develop skills to handle animals confidently and safely in diverse situations.

- **Workplace Safety:** Understand and apply workplace health and safety processes specific to the animal care industry.
- **Communication Skills:** Enhance your ability to communicate effectively with colleagues and clients in animal care environments.

Personal requirements are:

- A genuine passion for animals and their wellbeing
- Willingness to get hands-on in all aspects of animal care, including cleaning, feeding and health checks.
- Basic physical fitness to perform tasks like lifting animals, cleaning enclosures, and working on your feet.
- Time management and commitment, to keep up with practical and written tasks and completing both in-class and self-directed study.
- Positive attitude toward learning and taking on feedback from lecturers.

COST	Uniform - \$50.00 (approx.).	DURATION	Three (3) term program, one (1) day per week.
UNIFORM REQUIREMENTS	CR TAFE student polo shirt. Enclosed (non-slip) shoes. Suitable clothing and hat for regular field activities.	WORK PLACEMENT REQUIREMENTS	Nil.
CAREER OPPORTUNITIES	Animal Care Attendant, Pet Shop Employee, Cattery Attendant, Kennel Hand, Animal Handler, Animal Shelter Worker.	COURSE PATHWAYS	ACM30122 Certificate III in Animal Care Services. ACM40418 Certificate IV in Veterinary Nursing.

ANIMAL CARE



AUTOMOTIVE



PATIS Student
Automotive
JACK

ARCHE

PATIS Student
Automotive
ARCHE



AUTOMOTIVE

AUR20720 Certificate II in Automotive Vocational Preparation*

*Year 11 only

With this Certificate II you will learn to identify and inspect mechanical and electrical components as well as systems of light vehicles, heavy vehicles and outdoor power equipment.

This qualification also covers the skills and knowledge required to perform minor maintenance and repair of an automotive vehicle body.

You will learn skills in:

- Using and maintaining tools and equipment in an automotive workplace.
- Dismantling, tagging and servicing engines.
- The safety and environmental relevant legislation and workshop practice.
- How to resolve routine problems and communicate effectively in an automotive workplace.

COST	Uniform - Approx. \$250.	DURATION	Two (2) days per week over two (2) terms in Semester 2.
UNIFORM REQUIREMENTS	Long drill trousers (navy blue) and long sleeved drill shirt (hi-vis yellow & blue). Steel capped boots that comply with Australian Safety Standards. Safety glasses (first pair supplied by CR TAFE).	WORK PLACEMENT REQUIREMENTS	50 hours recommended (not mandatory).
CAREER OPPORTUNITIES	Completion of this course can open pathways into entry-level roles and apprenticeships in the automotive industry	COURSE PATHWAYS	Further study or apprenticeship in the automotive industry.

Please note: An aptitude test is required for this course.

MEM20422 Certificate II in Engineering Pathways

If you are looking for a trade with many different employment opportunities, this qualification is a fantastic starting point.

Experience an insight into becoming a Fabricator or Fitter and Machinist, and after successful completion of this qualification, you may choose to become a trade assistant or progress to an Apprenticeship in a wide variety of fields, including; Fabrication - Heavy (Boilermaker); Light (Sheetmetal); Welder or Heavy/Welder and Fitting and Machining.

Students will be able to choose their focus (Fitting and Machining or Mechanical), but all students will gain practical skills and knowledge

in a range of metals and engineering industry areas. You will also learn about safety in the workplace, computing and maths and practice the skills you have learned in a workshop environment.

Gain skills in:

- Using tools
- Measuring and calculating
- Technical drawing and drafting
- Load shifting
- Thermal cutting
- Using forging and casting equipment
- Welding.

COST	Uniform - Approx. \$250. No course textbook required.	DURATION	Two (2) days per week, three (3) terms and work placement.
UNIFORM REQUIREMENTS	Long drill trousers (navy blue) and long sleeved drill shirt (colour determined by focus area). Steel capped boots that comply with Australian Safety Standards. Safety glasses (first pair supplied by CR TAFE).	WORK PLACEMENT REQUIREMENTS	Non-mandatory 40 hours.
CAREER OPPORTUNITIES	Successful completion of this qualification may lead to employment as an Apprentice in any of the following industries: <ul style="list-style-type: none"> • Boilermaker • Sheet metal worker • Mechanical Fitter • Fitter/Machinist 	COURSE PATHWAYS	This course is a pathway to MEM31925 Certificate III in Engineering - Fabrication Trade and MEM30219 Certificate III in Engineering - Mechanical Trade (Fitting/ machining) which are apprenticeship courses. You will need to be employed and registered as an apprentice before you can commence apprenticeship training.

Please note: An aptitude test is required for this course.

ENGINEERING





HORTICULTURE

AHC20422 Certificate II in Horticulture

Be a part of the new food revolution and vibrant industry that will feed the world. This qualification provides you with the skills and knowledge you need to work within Australia's rapidly growing horticulture sector.

You will learn the latest techniques and technologies to ensure you're work ready, which will help you get into a rewarding career.

This course will provide you with the practical skills and knowledge to work across a range of horticulture sectors, including aquaponics and hydroponics.

You will gain skills & knowledge in:

- Soil testing and plant nutrition
- Safe handling and use of Ag-chemicals
- General workplace safety
- Propagation techniques
- Tending nursery plants
- Planting and pruning techniques
- Treating plant pests and diseases and disorders
- Maintaining garden beds and reticulation
- Using a range of horticultural tools and equipment.

COST	Uniform - \$50.00 (approx.).	DURATION	Three (3) term program, one (1) day per week.
UNIFORM REQUIREMENTS	CR TAFE student polo shirt (uniform). Enclosed shoes.	WORK PLACEMENT REQUIREMENTS	NIL.
CAREER OPPORTUNITIES	Successful completion of this qualification provides you with the opportunity to become a Horticulture Worker/Assistant in parks and gardens, nurseries and landscaping businesses.	COURSE PATHWAYS	AHC30722 Certificate III in Horticulture. AHC40422 Certificate IV in Horticulture.



AHC21024 Certificate II in

Conservation and Ecosystem Management

This qualification will provide you with the practical skills and knowledge to gain employment in the Conservation and Ecosystem Management industry, including gardening, nursery work and landscaping, plus parks and gardens management.

Working in the Conservation and Land Management industry is for people who love to

work in the outdoor environment and recognise the value of restoring natural bushland and coastal areas.

Develop skills in natural resource management, land management, mine site rehabilitation, developing and leading teams to implement conservation, land management strategies and more.

COST	Uniform - \$50.00 (approx.).	DURATION	Three (3) term program, one (1) day per week.
UNIFORM REQUIREMENTS	CR TAFE student polo shirt (uniform). Enclosed shoes.	WORK PLACEMENT REQUIREMENTS	NIL.
CAREER OPPORTUNITIES	School Gardener, Nursery Worker, Council Gardener, Landscaper, and Private Contract Gardener.	COURSE PATHWAYS	AHC31424 Certificate III in Conservation and Ecosystem Management. AHC40924 Certificate IV in Conservation and Ecosystem Management. AHC51120 Diploma of Conservation and Ecosystem Management. Further studies at university.





AHC21216 Certificate II in
Rural Operations

This entry-level qualification is great for those wanting to try their hand at a range of skills useful in the Agriculture industry and beyond, providing you with the basic skills to work across rural and regional Australia.

You will gain practical skills to work safely on rural worksites and carry out a range of manual tasks, including how to operate machinery and safely use manual and power tools.

Learn skills in:

- Fencing
- Machinery Operations
- Land and Ecosystem management
- How to maintain structures and property
- Horticultural operations
- The correct use of hand tools.

COST	Uniform - cost TBA	DURATION	Three (3) term program, one (1) day per week.
UNIFORM REQUIREMENTS	Work shirt. Drill work trousers. Steel capped boots. Hat.	WORK PLACEMENT REQUIREMENTS	NIL.
CAREER OPPORTUNITIES	Successful completion of this qualification can lead you to an exciting path from stockman/farmhand to station/farm manager.	COURSE PATHWAYS	AHC30722 Certificate III in Horticulture. AHC30122 Certificate III in Agriculture. AHC40422 Certificate IV in Horticulture.

CHC22015 Certificate II in
Community Services

Do you have a passion for working with those in need and making a positive impact? Community service workers provide support to individuals, groups and communities and work with them to overcome systemic barriers and enhance their well-being.

Community service workers can have a positive impact on the lives of individuals and communities by promoting social justice, facilitating social inclusion and supporting individuals in reaching their full potential.

This qualification may serve as a pathway into the growing community services workforce. It can also be a step into further studies such as aged care, community, disability, youth, mental health or home and community care.

Those who work at this level:

- Provide assistance and support to individuals in the health or community services context
- Provide first point of contact in organisations committed to assisting and supporting individuals in times of stress or crisis
- Assist individuals in meeting their needs, including identifying immediate needs and providing information for referral
- Are expected to know service policies and procedures, be able to apply said policies and procedures, and also be able to follow direction from supervisors.

You will be prepared to work in roles where you will:

- Support individuals by providing a first point of contact in a crisis situation and referral to a broad range of services, or
- Work in residential facilities and/or in community services under direct or regular supervision within clearly defined organisation guidelines and service plans.

COST	Uniform - \$50.00 (approx.).	DURATION	Three (3) terms, one (1) day per week.
UNIFORM REQUIREMENTS	CR TAFE student polo shirt (uniform).	WORK PLACEMENT REQUIREMENTS	20 hours, completed on campus.
CAREER OPPORTUNITIES	Successful completion of this qualification provides you with the opportunity to become an Assistant Community Services Worker, Personal Care Assistant, Front Desk Officer/ Receptionist, Support Worker, Youth Worker or a Residential Support Worker.	COURSE PATHWAYS	CHC32015 Certificate III in Community Services. CHC33021 Certificate III in Individual Support.

Please note: An aptitude test is required for this course.

COMMUNITY SERVICES



SIT20322 Certificate II in
Hospitality

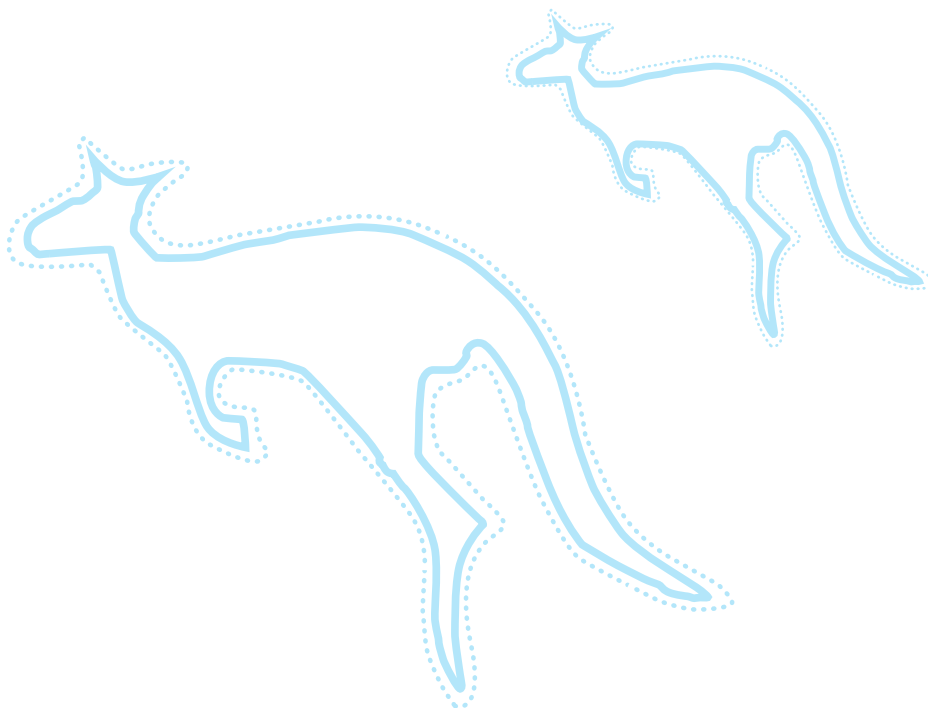
Do you want to travel? Would you like to build your confidence and be better at speaking with customers? If you answered “yes”, this qualification is for you!

Upon successful completion of this qualification, you will gain invaluable knowledge and experience such as making mocktails, barista skills, restaurant service skills, customer service, events, and catering.

A Certificate II in Hospitality will assist you to find work in places such as restaurants, hotels, motels, clubs, pubs, cafés, and the catering industry.

COST	Uniform – \$50.00 (approx.).	DURATION	Three (3) term program, one (1) day per week.
UNIFORM REQUIREMENTS	Black CR TAFE work shirt (supplied). Black trousers or business skirt (worn with stockings). Black enclosed shoes.	WORK PLACEMENT REQUIREMENTS	Strongly encouraged. This will assist with completing minimum service hours.
CAREER OPPORTUNITIES	Café Attendant, Catering Assistant, Bar Attendant, Front Office Assistant.	COURSE PATHWAYS	SIT30622 Certificate III in Hospitality. SIT40422 Certificate IV in Hospitality. SIT50422 Diploma Hospitality.

Please note: An aptitude test is required for this course.



HOSPITALITY





RII21222 Certificate II in
Autonomous Workplace Operations

Step into the future of work. Autonomous technologies are transforming the way industries operate, creating demand for workers with digital, technical and operational skills. Build the foundational knowledge and practical skills needed to start your career in autonomous workplace operations.

Why choose this course?

- Gain hands-on experience with robotics, automation and autonomous technologies
- Learn using industry-standard simulation software and programmable systems
- Explore real-world autonomous operations through access to live operational data
- Develop practical skills in workplace safety, communication and problem-solving
- Build a foundation for further study and careers in technology-driven industries.

COST	Approx \$48 (polo shirt).	DURATION	One (1) day per week for three (3) terms.
UNIFORM REQUIREMENTS	Polo shirt. For excursions: Steel-capped boots that comply with Australian Safety Standards. High-vis long-sleeve shirt and long pants.	WORK PLACEMENT REQUIREMENTS	NIL.
CAREER OPPORTUNITIES	Autonomous Plant Operator Assistant Remote Operations Support Worker Entry-level roles in mining, energy, and industrial sectors.	COURSE PATHWAYS	Upon successful completion of this course, students can choose to take on further studies in engineering and mining.

Please note: Although there is no aptitude test for this course, a student interview will be required.



COMMUNICATIONS

UEE20720 Certificate II in

Data and Voice Communications

This course is a great starting point for anyone interested in a hands-on career in the electrical and telecommunications industry. You'll gain real-world experience working with communication cabling and systems used in homes, businesses and commercial settings.

The course builds practical skills and knowledge while introducing industry expectations, safety practices and standards—giving you a strong foundation for further study or entry-level work.

You will gain knowledge and skills in:

- Installing and maintaining telecommunications cabling
- Using hand and power tools
- Reading technical drawings and diagrams
- Testing and fault finding communication systems
- Working safely in an electrotechnology workplace
- Applying Australian Communications and Media Authority (ACMA) cabling requirements and standards

COST	Uniform: Approx \$52. First aid certificate: Approx \$50.	DURATION	Two (2) days per week, for three (3) terms.
UNIFORM REQUIREMENTS	Long or short drill trousers (navy blue) and short (or long) sleeved drill shirt (navy blue). Safety boots. Safety glasses (first pair provided).	WORK PLACEMENT REQUIREMENTS	NIL.
CAREER OPPORTUNITIES	Successful completion of this qualification provides you with the opportunity to gain an apprenticeship in the Electrical trade. ACMA Open Cabling Registration. Endorsement for Open Registration.	COURSE PATHWAYS	UEE30820 Certificate III in Electrotechnology Electrician. Trades apprenticeship.

Please note: Although there is no aptitude test for this course, a student interview will be required.



SHB20121 Certificate II in
Retail Cosmetics

Do you have a flair for makeup? Learn more and work in an exciting industry where you can meet new people and help build their confidence whilst doing something you enjoy.

You will develop skills and knowledge to sell, demonstrate and apply cosmetic products to industry standards.

You will gain hands-on experience in a variety of beauty and makeup techniques, and the skills needed to work in a cosmetic retail environment, including beauty and hairdressing salons, retail outlets and department stores, or to work as a freelance makeup artist in the future.

COST	Uniform - Tunic Top \$75.00 (approx.).	DURATION	One (1) year program, two (2) days per week.
UNIFORM REQUIREMENTS	Tunic Top. Black pants. Closed-in shoes	WORK PLACEMENT REQUIREMENTS	NIL.
CAREER OPPORTUNITIES	Successful completion provides opportunities to work in a hairdressing or beauty salon, retail outlet or department store.	COURSE PATHWAYS	SHB40121 Certificate IV in Beauty Therapy. SHB50121 Diploma of Beauty Therapy.



HAIRDRESSING

SHB20216 Certificate II in Salon Assistant

When you complete the Certificate II in Salon Assistant, you will gain the skills to impress potential employers as a Salon Assistant and be on your way to becoming a hairdresser or barber.

- Maintaining hairdressing tools
- Scheduling appointments
- Merchandising
- Workplace health and safety

Gain knowledge and skills in:

- Supporting hairdressers in a salon
- Shampooing, colouring and braiding hair

COST	Uniform - \$50.00 (approx.).	DURATION	One (1) year program, one (1) day per week.
UNIFORM REQUIREMENTS	Polo shirt. Black pants, jeans or knee-length shorts.	WORK PLACEMENT REQUIREMENTS	NIL.
CAREER OPPORTUNITIES	Successful completion of the Salon Assistant provides a stepping stone into a Hairdressing/Barbering Apprenticeship or possible entry into the Certificate IV in Beauty Therapy.	COURSE PATHWAYS	SHB30416 Certificate III in Hairdressing – Apprenticeship pathway. SHB30516 Certificate III in Barbering – Apprenticeship pathway. SHB40121 Certificate IV in Beauty Therapy.

AQUACULTURE

SFI20119 Certificate II in Aquaculture

Do you enjoy working with fish and other marine and freshwater species?

The Certificate II in Aquaculture provides the skills and knowledge to work in the fast-growing Aquaculture industry and gain the expertise to work as a field hand in an aquaculture operation such as a hatchery, sea cage or pond facility.

You will gain knowledge and skills in:

- Handling and harvesting fish and other aquaculture stock
- Collecting broodstock
- Filleting fish and handling seafood
- Measuring water quality
- Treating diseases
- Controlling fish environments.

COST	Uniform - \$50.00 (approx.).	DURATION	Three (3) term program, one (1) day a week.
UNIFORM REQUIREMENTS	CR TAFE student polo shirt (uniform).	WORK PLACEMENT REQUIREMENTS	NIL.
CAREER OPPORTUNITIES	Aquaculture Field Hand or Hatchery or Nursery Assistant. Further study into Certificate III in Aquaculture may lead to opportunities as a general hand in aquaculture farms, hatcheries, processing facilities, zoos and pet stores.	COURSE PATHWAYS	SIFI30119 Certificate III in Aquaculture. MAR20324 Certificate II in Maritime Operations (Coxswain Grade 1 Near Coastal).



MARITIME

SFI20219 Certificate II in Fishing Operations

Would you like to work on the ocean?

This qualification will provide you with the practical skills and knowledge to work as a deckhand on commercial fishing vessels, ferries or a dive charter vessel.

You will complete a broad range of tasks that may include maintaining fishing gear, operating small vessels, using deck equipment, processing and basic marine science skills.

This qualification provides the main entry point for individuals working in the fishing sector of the seafood industry.

Gain knowledge and skills in:

- Assisting with operation of fishing gear and equipment
- Basic processing and temperature control of harvest
- General cleaning and maintenance of equipment and vessel
- Handling, harvesting and sorting bycatch (incidental capture of non-target species).

COST	Uniform – \$50.00 (approx.).
UNIFORM REQUIREMENTS	CR TAFE student polo shirt (uniform). Enclosed (non-slip) shoes. Suitable clothing and hat for regular field and boating activities.
CAREER OPPORTUNITIES	Further study may lead to employment opportunities as a fisher or general purpose hand on a fishing vessel, charter boat or on an aquaculture vessel.
DURATION	Three (3) term program, one (1) day a week.
WORK PLACEMENT REQUIREMENTS	NIL.
COURSE PATHWAYS	SFI30219 Certificate III in Fishing Operations. SFI30119 Certificate III in Aquaculture.



*We can't wait to see
what you achieve!*



**For more information about
Central Regional TAFE's
VETDSS program, contact:**

Coordinator Education &
Training Programs:

VETDSS@crtafe.wa.edu.au



centralregionaltafe.wa.edu.au
info@crtafe.wa.edu.au
1800 672 700

RTO: 52789
Version 2