

2026 VETDSS STUDY GUIDE

WHEATBELT REGION



DISCLAIMER

- Course information and content contained in this document are correct at the time of printing.
- Course information is subject to change without notice.
- Commencement of courses is subject to funding, staffing and overall student interest.

IT ALL STARTS HERE.

Vocational Education and Training (VET) prepares you with the knowledge and skills you need in a rapidly evolving employment environment. At CR TAFE it is our commitment to help you succeed in every way possible.

CONTENTS

Whoever You Want to Be	Page 4
Pathways	Page 5
About VETDSS	Page 6
Entrance Requirements	Page 8
Information for Students, Parents and Guardians	Page 9
VETDSS Trade Pathway Qualifications	Page 11
VETDSS Certificate II Qualifications	Page 19
VETDSS Higher Level Qualifications	Page 31
Skill Sets	Page 41
Contact	Back Page



WHOEVER YOU WANT TO BE.

Ask yourself:

1. What am I passionate about?
2. What are my strengths?
3. What careers will allow me to follow my passion and develop my strengths?
4. How can I get a better understanding of different career opportunities?
5. What job opportunities will there be in the future?
6. What qualification will help me get the job I want?
7. What are my long-term goals?

We help you get to where you want to be in the future, supporting you every step of the way.

Central Regional TAFE's industry-experienced staff are dedicated to your success, helping you find a VETDSS pathway or Pre-Apprenticeship, and Traineeship in School (PATiS) program that best suits you.

Working closely with industry partners and the community, we provide every opportunity for you to achieve your goals. This ensures our training is cutting edge, and our graduates are highly skilled and ready for tomorrow's workforce.

Did you know?

89.5% of 2024 TAFE graduates in Australia are satisfied with their training.*

The majority of 2024 TAFE graduates were not only satisfied with their training, but gained employment after training as well.†

9/10 jobs predicted to be created between 2022-2026 will require a post-secondary school qualification.‡

*VET Student Outcomes, NCVER, 2024

†VET Student Outcomes, NCVER 2024

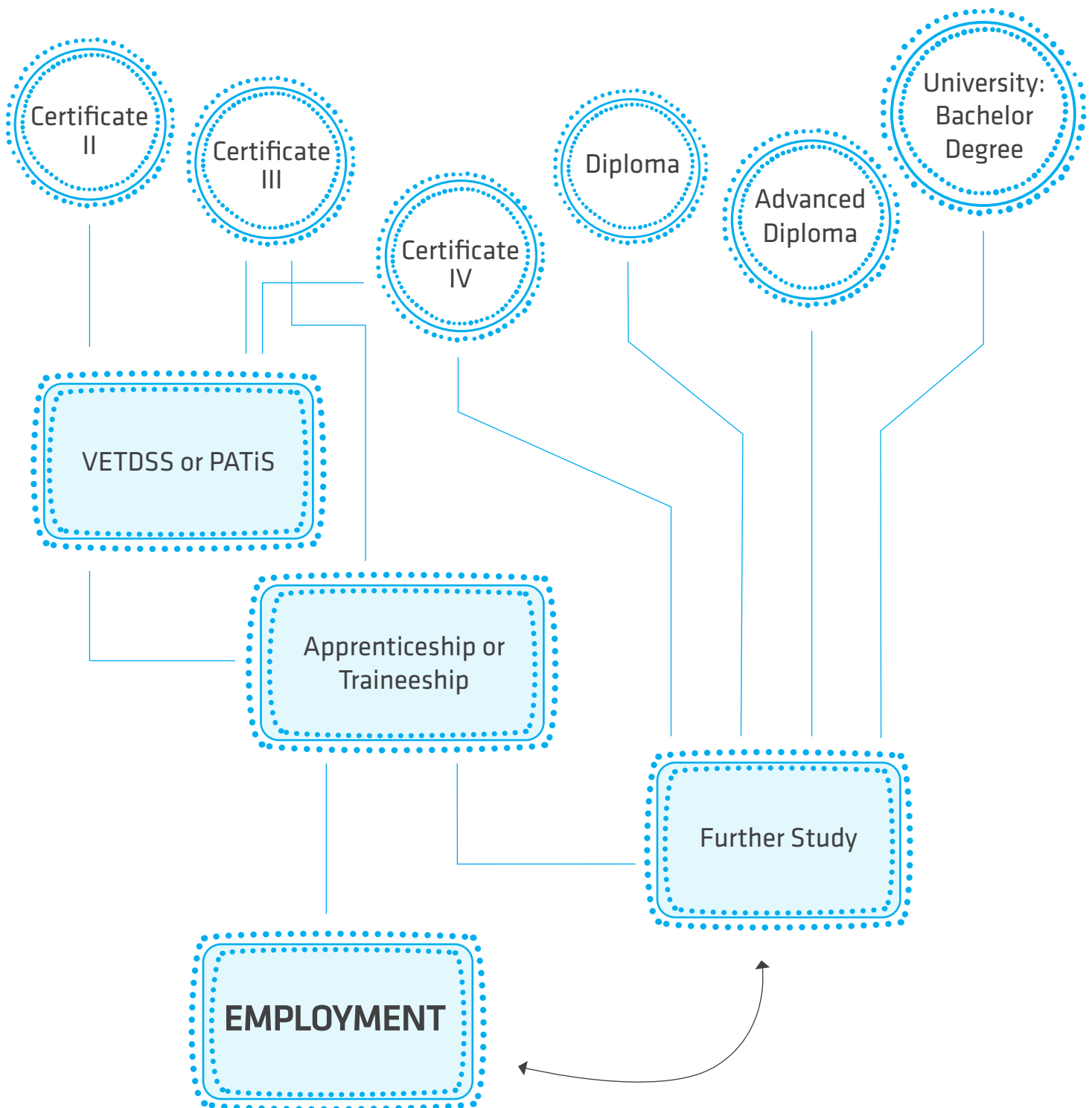
‡Projecting Employment to 2026, NSC 2022

PATHWAYS

Whatever your career goal is, training at CR TAFE can help you get there, whether you are studying a Certificate, a Diploma qualification, or a Degree and beyond.

Perhaps getting an apprenticeship or traineeship is your goal? By studying a VETDSS qualification, you can have an advantage.

Even if you change your mind along the way, rest-assured the time spent completing your vocational education and training was worth it.





ABOUT VETDSS

VETDSS Pathways are the perfect introduction into the world of work.

Learn practical skills in Years 11 and 12 while gaining an insight into what to expect in the workplace.

Success in your program can lead to employment or give you a head start in other nationally recognised qualifications. Some higher-level qualifications even offer pathways into higher education and university studies.

VOCATIONAL EDUCATION AND TRAINING (VET) DELIVERED TO SECONDARY STUDENTS

VETDSS courses are designed for students who are still at high school but would like to start working or studying in a specific field. You can complete full vocational qualifications in addition to your WACE.

Vocational courses provide training options to progress into the world of work after high school, and offer a different pathway to university, apprenticeships and other higher qualifications.

For more information on how a VET qualification can be a unique and alternative pathway into university, scan the QR code below.

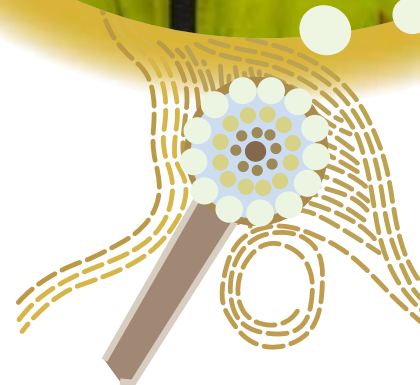
Some of our popular courses include:

- 52895WA *Certificate IV in Preparation for Health and Nursing Studies*
- BSB30120 *Certificate III in Business* - a school-based Traineeship in Business, a popular way to transition into the workforce or learn valuable work-related skills.

We work closely with regional secondary schools to offer a wide range of programs including Pre-Apprenticeships and Traineeship in Schools (PATiS) and higher qualifications.

PRE-APPRENTICESHIPS AND TRAINEESHIP IN SCHOOLS (PATiS)

PATiS programs see students attend practical and theory based training at CR TAFE for two (2) days per week where they are taught by qualified lecturers. Students are also required to participate in work placement which is an excellent opportunity for them to showcase their skills and work readiness to potential employers.



If you are in Year 11 or 12, the PATiS program involves attending school, completing Certificate II Pre-Apprenticeship training at CR TAFE, and completing work placements.

There is no doubt employers look favourably at the candidate who has a proven track record of study, demonstrated the capacity to apply themselves to a formal TAFE course and understands the practices and terminology associated with the trade in question.



ENTRANCE REQUIREMENTS

FEES AND CHARGES

Secondary school students participating in a VETDSS program as part of their secondary education are exempt from course and resource fees, however, depending on the chosen course, students may be required to purchase protective clothing, uniforms, text books, student cards and equipment at their own cost.

Specific information regarding fees and charges (if required) will be outlined for each qualification.

HOW TO APPLY

A student may select the course they want to study in conjunction with their parent/guardian and school's Careers Officer.

The Careers Officer will provide a link to the CR TAFE online registration form.

DATES

All applications for 2026 programs must be submitted via the CR TAFE online registration form. Please contact your school's Careers Officer for access and deadline information.

An interview will be conducted shortly after to determine successful applicants for each program.

Successful students will be notified by their Careers Officer in Term Four and will be invited to attend an orientation session at the CR TAFE campus in January 2026.

INFORMATION FOR STUDENTS, PARENTS AND GUARDIANS

INDUCTION AND ATTENDANCE

The student orientation day provides students with further information about scheduled classes, activities and a chance to meet the lecturer and have a tour around campus.

Students are responsible for ensuring their attendance in class and notifying their lecturers if they are unable to attend or running late.

Attendance is recorded and all absences are sent to parents via SMS message and communicated to the student's school on the same day. Repeated absences may result in a school being contacted regarding a student's continuation in the program.

CLASSROOM AND TAFE ENVIRONMENT

CR TAFE is an adult learning environment with a focus on developing skills and knowledge to the standard required in the workplace. This means:

- Students are responsible for their own learning and are expected to manage their workload, and seek assistance from lecturers when needed.
- Learning activities at CR TAFE are not limited to lessons in a classroom environment and may include: lectures, tutorials, online learning, work placements, assessments, research, project work, group work or workshops.
- Course hours include a wide range of delivery and assessment activities and may not always be used for classroom teaching.
- Students under 18 years of age share CR TAFE facilities such as the library, canteen, and computer labs with adult students.

- Some courses are delivered across more than one campus or involve a workplace. Parents/guardians are responsible for their child's travel arrangements to and from the campus or workplace.
- Students may be required to complete assessment tasks/assignments outside of their scheduled timetable. Some of these assessment tasks/assignments are undertaken in the community.

SUPERVISION

While attending CR TAFE, you are under the supervision of your lecturer taking the class. You will not be supervised during break times. You are expected to remain within the College grounds unless you provide your lecturer with written notification from a parent or the school that you intend to leave the College earlier than the advertised class finish time.

EXCURSIONS

CR TAFE provides parents/guardians with information on excursions prior to the event. Written parental consent will be sought for students under 18 to participate in excursions away from CR TAFE premises. If parental consent is not given, your child will not be able to attend the excursion and CR TAFE will not provide an alternative supervised activity. Students may be required to make their own way to excursions. In these situations parents/guardians will be responsible for organising transport to and from excursions.

HEALTH AND SAFETY

CR TAFE strives to provide an environment that supports the health and well-being of all students by:

- Following the relevant WHS policy, guidelines and practices.
- Providing designated first-aid officers, available to students at all campuses.
- Providing assistance and if necessary, arranging for qualified medical personnel in case of an emergency.
- Promoting a friendly and inclusive environment where bullying or any form of harassment is not accepted. Any student experiencing bullying or harassment of any kind should inform a CR TAFE staff member immediately.
- Ensuring all relevant staff have a Working with Children Check subject to the Working with Children (Criminal Record Checking) Act 2004.
- Implementing the Emergency Response Plan in case of an emergency.
- Providing parents/guardians with a copy of an Accident/Incident report if their child is seriously injured.

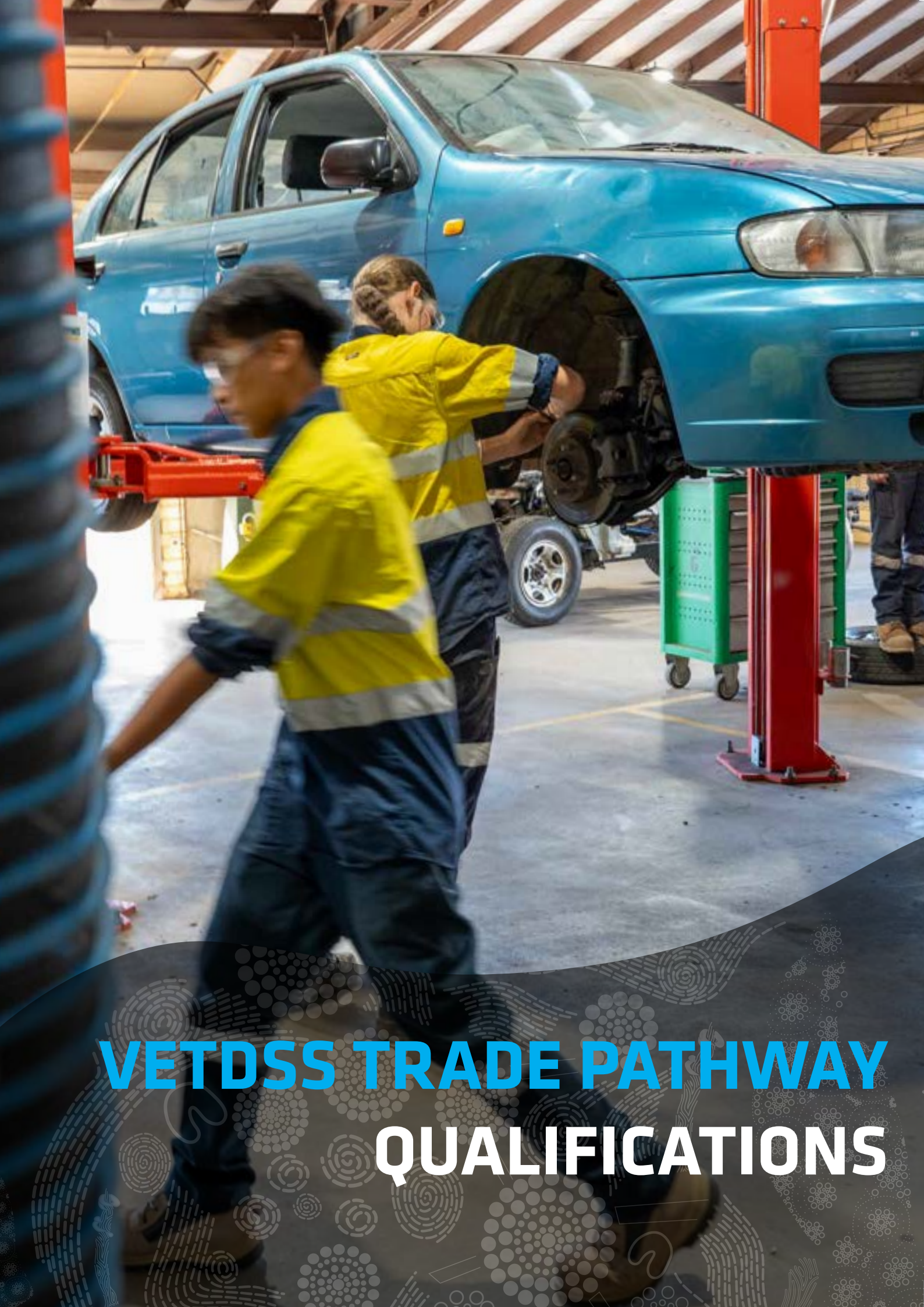
INSURANCE

Students are not covered for Personal Accident or any loss or damage to property whilst on a CR TAFE campus.

However, CR TAFE does hold cover with the Insurance Commission of WA (RiskCover) that provides Personal Accident cover for students who are undertaking unpaid work experience that is allocated or arranged by CR TAFE. Personal Accident cover is also extended to those students attending any official College camp, excursion, trip or other off campus activity (excluding sports days other than interstate sporting events, carnivals or national championships) which is approved and organised by CR TAFE.

The responsibility is placed on parents/guardians in relation to whether they arrange their own Personal Accident insurance or private health cover for their child if they believe CR TAFE coverage is not adequate.





VETDSS TRADE PATHWAY **QUALIFICATIONS**

AUTOMOTIVE



AUR20720 Certificate II in

Automotive Vocational Preparation

If working with cars and trucks is what you would like to do, this course is the one for you. Learn how to service engines, as well as how to use and maintain workplace tools and equipment.

After successful completion of this qualification, you may look towards an Apprenticeship in a range of areas including: Motor Mechanic (Light), Heavy Duty Road Transport, Mobile Plant, Auto Electrician or Panel Beater.

Gain skills in:

- Communicating effectively
- Working in a team environment
- Planning organising and problem solving skills
- Servicing a vehicle, and
- Performing general vehicle maintenance and small repairs.

You will have the opportunity to test your skills in a simulated automotive workshop during the course.

ADDITIONAL COSTS	NIL.	DURATION	Two (2) year program, one (1) day per week.
UNIFORM REQUIREMENTS	Long pants, Long sleeved drill (hi-vis) shirt. Steel capped boots that comply with Australian Safety Standards. Clear safety glasses.	WORK PLACEMENT REQUIREMENTS	NIL.
CAREER OPPORTUNITIES	Successful completion of this qualification may lead to employment as an Apprentice Light Vehicle Mechanic, Apprentice Heavy Vehicle Mechanic, Apprentice Plant Mechanic, Apprentice Agricultural Mechanic, Apprentice Spray Painter, Apprentice Panel Beater, Apprentice Automotive Electrician.	COURSE PATHWAYS	Multiple apprenticeships in the automotive industry, such as AUR30420 Certificate III in Agricultural Mechanical Technology. AUR30620 Certificate III in Light Vehicle Mechanical Technology. AUR31020 Certificate III in Automotive Sales.





BUILDING & CONSTRUCTION

CPC20220 - AC61 Certificate II in

Construction Pathways (Building Maintenance)

On successful completion of this course you can seek an apprenticeship in the building and construction industry in your chosen trade stream and gain credit towards an apprenticeship for completed subjects.

The first stage of the course has units common to eleven construction trades, providing a great introduction to the industry, its culture, occupations, job roles and workplace expectations.

The elective units of competency are carpentry based, covering Occupational Health and

Safety requirements, the industrial and work organisation structure, communication skills, work planning, carpentry and basic use of tools and materials.

Develop skills in:

- General construction techniques
- Working as part of a team
- Work safely in the construction industry
- Using a variety of construction tools and equipment.

ADDITIONAL COSTS	NIL.	DURATION	Two (2) year program, one (1) day a week.
UNIFORM REQUIREMENTS	Long pants, long sleeved drill (hi-vis) shirt. Steel capped boots that comply with Australian Safety Standards. Clear safety glasses.	WORK PLACEMENT REQUIREMENTS	NIL.
CAREER OPPORTUNITIES	On completion of this course, you may be able to seek an apprenticeship in the construction industry.	COURSE PATHWAYS	Multiple apprenticeships in the construction industry, such as RII30820 Certificate III in Civil Construction Plant Operations.



ENGINEERING

MEM20422 Certificate II in Engineering Pathways

If you are looking for a trade with many different employment opportunities, this qualification is a fantastic starting point. Learn mechanical cutting, thermal cutting, gouging and welding.

Upon completion of this qualification, you may choose to become a trade assistant or progress to an Apprenticeship in a wide variety of fields, including; Fabrication - Heavy (Boilermaker); Light (Sheetmetal); Welder or Heavy/Welder and Fitting and Machining.

This qualification provides practical skills and knowledge in a range of metals and engineering industry areas. Also learn about safety in the workplace, computing and maths and practice the skills you have learned in a workshop environment.

The skills packaging for the qualification has been developed on an assumption that competency will be developed through a combination of on and off-the-job learning strategies, such as those delivered through a formal traineeship.

This course is an excellent opportunity to experience an insight into becoming a Fabricator or Fitter and Machinist.

Units completed may assist you in gaining employment as an apprentice.

Gain skills in:

- Using tools
- Measuring and calculating
- Technical drawing and drafting
- Load shifting
- Thermal cutting
- Using forging and casting equipment
- Welding.



ADDITIONAL COSTS	NIL.	DURATION	Two (2) year program, one (1) day per week.
UNIFORM REQUIREMENTS	<p>Long pants (cotton drill), long sleeved hi-vis shirt (cotton drill).</p> <p>Steel capped boots that comply with Australian Safety Standards.</p> <p>Clear safety glasses.</p>	WORK PLACEMENT REQUIREMENTS	NIL.
CAREER OPPORTUNITIES	<p>Once completed you will have the skills and knowledge to become a Trade Assistant or gain an apprenticeship in one of the following trades within the metals and engineering sector; Fabrication - Heavy (Boilermaker). Light (Sheetmetal), Welder or Heavy/ Welder trade or Fitting and Machining.</p>	COURSE PATHWAYS	<p>Certificate III Engineering apprenticeship qualifications and streams such as:</p> <p>MEM31922 Certificate III in Engineering - Fabrication Trade.</p>





VETDSS CERTIFICATE II QUALIFICATIONS





BSB20120 Certificate II in Workplace Skills

Be in high demand with skills that could take you anywhere. With industry and government forecasting a strong demand for office workers, with this qualification you will be ready to be recruited.

Learn skills and knowledge in basic MYOB, workplace organisation, customer service, workplace health and safety, desktop publishing, spreadsheets, creating electronic presentations and much more.

On completion you will be ideal for roles in data

entry, customer service, accounts or as an office clerk.

Gain skills in:

- Organising tasks.
- Managing workplace information.
- Producing business documents.
- Delivering customer service.
- Communicating effectively.
- Fostering innovation and change.

ADDITIONAL COSTS	NIL.	DURATION	One (1) year program.
UNIFORM REQUIREMENTS	Students are expected to attend class in neat, casual attire in a similar way as if they were dressing for work. Students should ensure they wear comfortable, non-slip closed shoes.	WORK PLACEMENT REQUIREMENTS	NIL.
CAREER OPPORTUNITIES	Administration Assistant, Personal Assistant, Clerical Worker, Data Entry Operator, Information Desk Clerk, Office Junior Receptionist.	COURSE PATHWAYS	Further studies in Business, such as: BSB30120 Certificate III in Business.



COMMUNITY SERVICES

CHC22015 Certificate II in **Community Services**

Do you have a passion for working with children, the elderly, or others in need? Do you have the desire to support others socially and emotionally to face life's difficulties and challenges in a practical way? Community Services workers provide support to individuals and groups making positive impact on their lives.

This qualification introduces the general field for community services. Students will learn the skills and knowledge to provide a first point of contact to assist individuals in meeting their immediate needs. Skills and knowledge will prepare students for a variety of job roles across different sectors.

This qualification may be used as a pathway into an industry which is currently a growth area. It can also be used as a step into further studies. These study areas include School Based Education Assistant, Aged Care Worker, Childcare Worker, Individual Support in aged care and Community Services Support Worker, including supporting people living with disabilities and those requiring daily living support.

It will prepare you to work in roles where you will:

- Support individuals and groups in residential and community setting, and plan and develop appropriate services to meet those needs.
- Work in a range of early childhood education settings to support children's well-being, learning and development.
- Support students and assist teacher's education programs and undertake a variety of tasks in the classroom and school setting.
- Support people who may require assistance with daily living due to ageing, or disability, and providing them with personal, physical, and emotional support.

Those who work at this level may:

- Provide assistance and support to clients accessing a service or requiring daily living support and meeting their immediate needs such as by providing shelter and food.
- Assisting early childhood educators in a childcare setting to facilitate learning under an approved learning framework and



support children's well-being, learning and development.

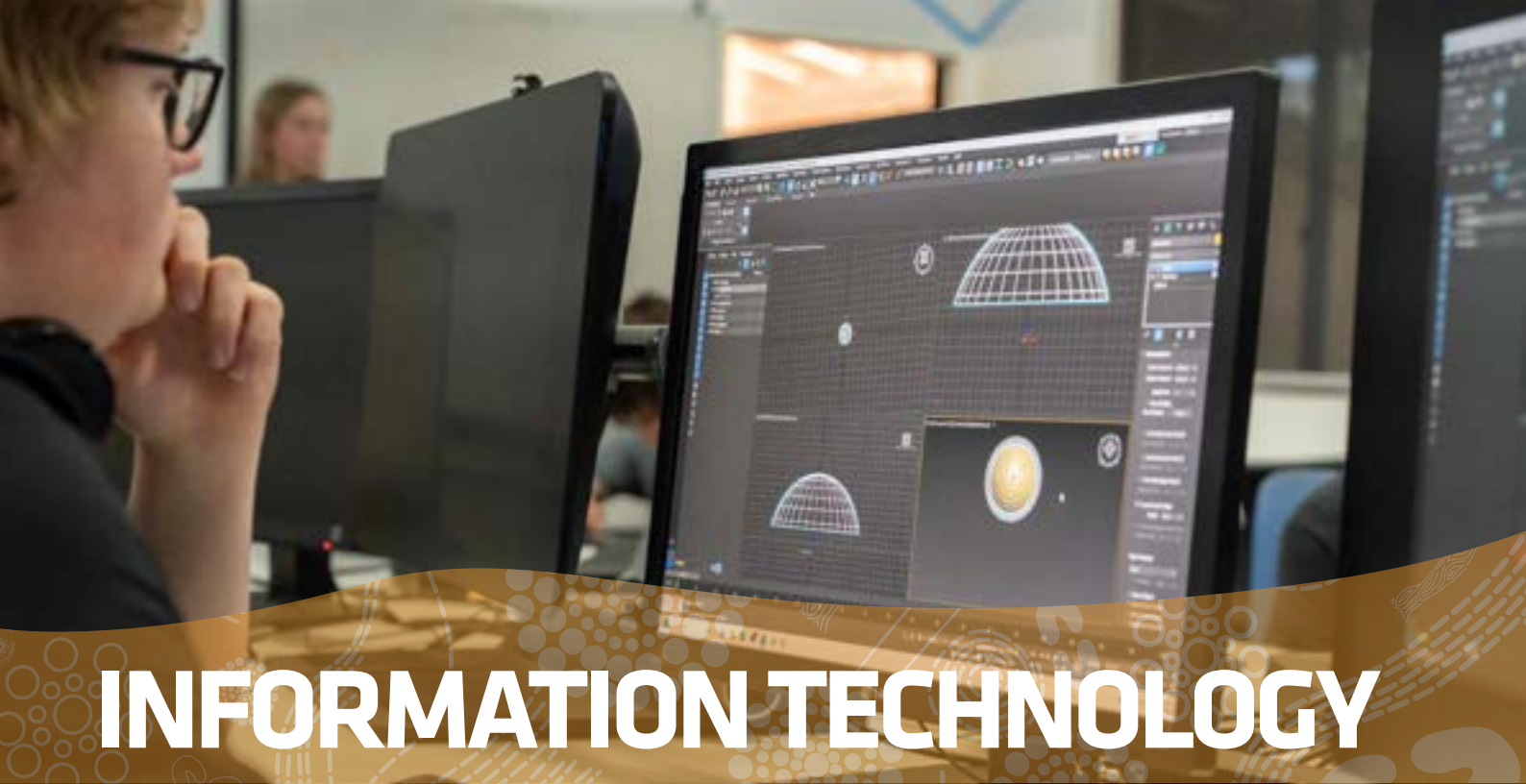
- Assist teachers in a school to implement planned programs, supervise students, and assist with classroom resources and materials.
- Provide support to those living with a disability to advocate for their rights

and provide individualised support under funding such as the National Disability Insurance Scheme (NDIS).

- Provide support to the elderly requiring in home care or care in a residential setting who have a person-centred individualised plan.

ADDITIONAL COSTS	NIL.	DURATION	18 months or three (3) semesters.
UNIFORM REQUIREMENTS	Students are expected to attend class in neat, casual attire in a similar way as if they were dressing for work. Students should ensure they wear comfortable, non-slip closed shoes.	WORK PLACEMENT REQUIREMENTS	38 hours.
CAREER OPPORTUNITIES	Successful completion of this qualification provides a great first step towards a career in Community Services, Aged Care, Children's Services or Disability Services.	COURSE PATHWAYS	CHC32015 Certificate III in Community Services. CHC33021 Certificate III in Individual Support. CHC30221 Certificate III in School Based Education Support. CHC30121 Certificate III in Early Childhood Education and Care.





ICT20120 Certificate II in
Applied Digital Technologies

Information technology is one of the fastest growing sectors in the world with high demand for skills.

This qualification gives you basic knowledge and skills in applied digital technologies and will prepare you to work in the industry.

You will work on a range of tasks under supervision of your lecturer.

Learn how to:

- Connect hardware peripherals.
- Develop solutions for basic ICT malfunctions and problems.
- Interact and solve queries with ICT clients.
- Install software applications.
- Design and produce business documents.
- Work effectively in business environments.

ADDITIONAL COSTS	NIL.	DURATION	Two (2) year program.
UNIFORM REQUIREMENTS	Students are expected to attend class in neat, casual attire in a similar way as if they were dressing for work. Students should ensure they wear comfortable, closed, non-slip shoes.	WORK PLACEMENT REQUIREMENTS	NIL.
CAREER OPPORTUNITIES	Network Administration, Network Technician, Network Support.	COURSE PATHWAYS	Further studies in the Information Technology field.



ACM20121 Certificate II in **Animal Care**

Do you have a passion for animals? Would you like to work with our furry and feathered friends?

Learn about caring for all types of animals by catering for animal nutritional needs, basic animal care and handling as well as first aid.

This qualification offers an opportunity to practice skills in the CR TAFE Animal Surgery and industry placement.

Gain skills and knowledge in:

- Learning fundamental animal care and handling methods
- Developing team-work, communication and problem-solving skills
- Catering for animal nutritional needs.
- Providing basic first aid to animals
- Assisting with animal health care
- Developing self-management and organisational techniques
- Working with teams of people who are willing to help make a difference to the lives of our animal companions

- Handling animals safely and confidently in a range of situations
- Dealing with emergencies
- Observing, monitoring and recognising health issues in animals
- Being able to assist in treating diseases and illness.

Important Information

This course involves some physical work. Students must be prepared to work outdoors and deal with dirty, smelly situations.

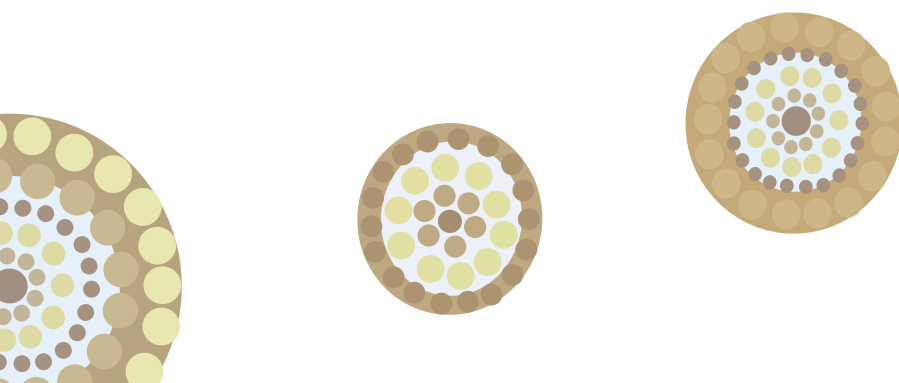
Personal requirements are:

- Being passionate about animals and their welfare
- Good communication skills and enjoying working with people
- Confidence and patience when working with animals
- An ability to undertake manual and sometimes heavy work
- Being observant and methodical.



ANIMAL CARE

ADDITIONAL COSTS	NIL.
UNIFORM REQUIREMENTS	CR TAFE Animal Studies T-shirt required for purchase - \$40 (approximate cost only. Price subject to change).
CAREER OPPORTUNITIES	Animal Care Attendant, Pet Shop Employee, Cattery Attendant, Kennel Hand, Animal Handler, Animal Shelter Worker.
DURATION	One (1) year program, one (1) day per week.
WORK PLACEMENT REQUIREMENTS	NIL.
COURSE PATHWAYS	ACM30122 Certificate III in Animal Care Services. ACM40418 Certificate IV in Veterinary Nursing.





TDS Student
Operations
STELLA

TAFE
Central Regional

STIHL



RURAL OPERATIONS

AHC21216 Certificate II in Rural Operations

This entry-level qualification is great for those wanting to try their hand at a range of skills useful in the Agriculture industry and beyond, providing you with the basic skills to work across rural and regional Australia.

You will gain practical skills to work safely on rural worksites and carry out a range of manual tasks, including how to operate machinery and safely use manual and power tools.

Learn skills in:

- Fencing
- Machinery Operations
- Land and Ecosystem management
- How to maintain structures and property
- Horticultural operations
- The correct use of hand tools.

COST	Uniform - cost TBA	DURATION	Eighteen (18) months.
UNIFORM REQUIREMENTS	Stationary, steel cap boots, long pants (cotton drill), long sleeve shirt (cotton), hat.	WORK PLACEMENT REQUIREMENTS	NIL.
CAREER OPPORTUNITIES	Successful completion of this qualification can lead you to an exciting path from stockman/farmhand to station/farm manager.	COURSE PATHWAYS	Further study in the agriculture or horticulture industry such as: AHC30122 Certificate III in Agriculture.





VETDSS HIGHER LEVEL QUALIFICATIONS





ANIMAL CARE

ACM30122 Certificate III in Animal Care Services

This course is ideal if you wish to begin working in animal care, and if you're already employed or volunteering in the industry, the course will give you a formal qualification to further develop your skill set and help advance further in your current workplace.

This qualification offers an opportunity to practice skills in the CR TAFE Animal Surgery and industry placement.

Important Information

This course involves some physical work. Students must be prepared to work outdoors and deal with dirty, smelly situations.

Gain skills and knowledge in:

- Providing basic first aid to animals
- Handling animals safely and confidently
- Walking, bathing and grooming a range of animals.

PREREQUISITES	Successful completion of ACM20121 Certificate II in Animal Care.
ADDITIONAL COSTS	NIL.
UNIFORM REQUIREMENTS	CR TAFE Animal Studies t-shirt required for purchase - approximate cost \$40 (price subject to change).
CAREER OPPORTUNITIES	A broad range of roles in the animal care industry, such as: Animal Care, Pet Sitting, Pet Grooming, Dog Daycare, Pet Boarding, Dog Walking, Rescue Shelters, Breeding Establishments.
DURATION	One (1) year program, one (1) day per week.
WORK PLACEMENT REQUIREMENTS	NIL.
COURSE PATHWAYS	Further studies in this field, such as ACM40418 Certificate IV in Veterinary Nursing.





BSB30120 Certificate III in
Business

Be in high demand with skills that could take you anywhere. Industry and government forecast a high demand for office workers, and with a Certificate III in Business, you will be ready to be recruited.

In this course you will learn skills and knowledge in basic MYOB, workplace organisation, customer service, workplace health and safety, desktop publishing, spreadsheets, creating electronic presentations and much more.

On completion you will be ideal for roles in

data entry, customer service, accounts or as an office clerk.

Gain skills in:

- Organising tasks
- Managing workplace information
- Producing business documents
- Delivering customer service
- Communicating effectively, and
- Fostering innovation and change.

COST	Uniform - \$45.00 (approx.).	DURATION	One (1) year program.
UNIFORM REQUIREMENTS	CR TAFE student polo shirt (uniform).	WORK PLACEMENT REQUIREMENTS	NIL.
CAREER OPPORTUNITIES	Administration Assistant, Personal Assistant, Clerical Worker, Data Entry Operator, Information Desk Clerk, Office Junior Receptionist.	COURSE PATHWAYS	Further study in the business industry, such as BSB40120 Certificate IV in Business.



EDUCATION SUPPORT

CHC30221 Certificate III in

School Based Education Support*

*Subject to numbers. Online delivery only.

Work in a school environment to support students with additional needs.

Support students and assist teachers to deliver education programs. As part of this qualification you will undertake a wide variety of tasks in the classroom and in school settings to contextualize this knowledge and improve your practical skills.

Learn how to effectively communicate with students and colleagues, provide support to students in developing their literacy and numeracy skills and learn how to work collaboratively as part of an educational team.

As part of this qualification you will undertake supervised work placement where you will be able to apply the skills and knowledge you have learned.

ADDITIONAL RESOURCES	Supporting Education Sixth Edition - Karen Kearns (will be provided).	DURATION	Online delivery. One (1) year program, one (1) day per week.
UNIFORM REQUIREMENTS	Neat and casual attire in line with workplace dress standards. Comfortable, non-slip closed shoes.	WORK PLACEMENT REQUIREMENTS	100 hours of mandatory work placement.
CAREER OPPORTUNITIES	Successful completion of this qualification provides you with the opportunity to become an Education Support Worker.	COURSE PATHWAYS	CHC40221 Certificate IV in School Based Education Support.



EARLY EDUCATION

CHC30121 Certificate III in Early Childhood Education and Care

If you are looking to work in the exciting and rewarding children's services industry, then this nationally accredited qualification is for you.

This qualification will give you industry exposure and a strong theoretical and practical foundation, ensuring you achieve the high levels of professionalism needed to excel in the childcare industry.

Gain skills in caring for children, applying health and hygiene principles, understanding legal and ethical

requirements, providing nutritional needs for babies and children, developing and implementing play experiences, understanding child development stages, working with families and working effectively in a team environment.

Upon completion of CHC30121 Certificate III in Early Childhood Education and Care, you will be eligible to enrol into the CHC50121 Diploma of Early Childhood Education and Care. This program is also an alternative pathway to university.

COST	<p>Texts: Birth to Big School 6th Ed. – Working in Children's Services, Karen Kearns (will be provided).</p> <p>The Big Picture 6th Ed. – Working in Children's Services, Karen Kearns (will be provided).</p> <p>Uniform – \$TBC.</p>	DURATION	<p>Eighteen (18) month program, two (2) days per week:</p> <ul style="list-style-type: none"> One (1) day work placement One (1) day at CR TAFE.
UNIFORM REQUIREMENTS	CR TAFE student polo shirt (uniform).	WORK PLACEMENT REQUIREMENTS	<p>Students will be required to attend one (1) day a week of placement at an Early Childhood Education and Care Service. Minimum 160 hours required.</p>
CAREER OPPORTUNITIES	Childhood Educator, Nanny or Family Day Carer.	COURSE PATHWAYS	<p>Further studies in this field, such as CHC50121 Diploma of Early Childhood Education and Care.</p>





HEALTH AND NURSING

52895WA Certificate IV in Preparation for Health and Nursing Studies

This course is designed to give students wanting to enter into a nursing and health programs a competitive edge.

Gain the knowledge and skills to transition into studying at a Diploma level in the future. This course will develop your knowledge in anatomy and physiology, microbiology, medical terminology, applied mathematics, physics and chemistry.

This qualification is an excellent pathway into HLT54121 Diploma of Nursing and other health studies. Please note that there are additional requirements for entrance into HLT54121 Diploma of Nursing qualification.

Refer to the course information for HLT54121 Diploma of Nursing for more information.

ADDITIONAL COSTS	NIL.	UNIFORM REQUIREMENTS	NIL.
DURATION	Start in Year 11 and complete Year 12 - four (4) semesters <ul style="list-style-type: none"> Year 11 - two (2) units per semester. Four (4) units total Year 12 - two (2) units/first semester, one (1) unit/second semester. Three (3) units total. or Start in Year 12 - two (2) semesters <ul style="list-style-type: none"> Four (4) units/first semester, three (3) units/second semester. 		
UNIFORM REQUIREMENTS	N/A.	WORK PLACEMENT REQUIREMENTS	NIL.
CAREER OPPORTUNITIES	Prepare for a career in health or nursing related occupations (after further study).		
COURSE PATHWAYS	HLT54121 Diploma of Nursing. Further studies at University towards Registered Nursing following HLT54121 Diploma of Nursing.		



SKILL SETS*

* Only available to year 11s and year 12s.



SKILL SETS*

*Only available to year 11s and year 12s.

BUSINESS

AE378 Business Ready Skill Set

This skill set will give you the skills and knowledge required to deliver all aspects of customer service, including how to create a relationship with customers, identify their needs, deliver services or products and process customer feedback.

You'll also learn how to use business technology and produce business documents, follow work health and safety (WHS) and emergency procedures and instructions, and use computer software and organise electronic information and data.

Upon successful completion you will receive a Statement of Attainment.

COOKERY

AE872 Fast Track to Hospitality Skill Set

This skill set will provide participants with practical skills, knowledge and experience in preparing food and beverages including a comprehensive introduction to the kitchen, bar, and front-of-house work areas.

Upon successful completion you will receive a Statement of Attainment.



*We can't wait to see
what you achieve!*

NOTES



**For more information about Central Regional TAFE's
VETDSS programs, please contact:**

Coordinator Education & Training Programs
enquiries@crtafe.wa.edu.au



**Central
Regional**

Registration Code 52789
Version 1

1800 672 700 | centralregionaltafe.wa.edu.au | enquiries@crtafe.wa.edu.au