

2024 VETDSS STUDY GUIDE

MIDWEST REGION

Pathways, starting in school

VOCATIONAL EDUCATION & TRAINING DELIVERED TO
SECONDARY STUDENTS



Central
Regional



DISCLAIMER

- Course information and content contained in this document are correct at the time of printing.
- Course information is subject to change without notice.
- Commencement of courses is subject to funding, staffing and overall student interest.

IT ALL STARTS HERE.

Vocational Education and Training (VET) prepares you with the knowledge and skills you need in a rapidly evolving employment environment. At CR TAFE it is our commitment to help you succeed in every way possible.

CONTENTS

Whoever You Want to Be	Page 4
Pathways	Page 5
About VETDSS	Page 6
Entrance Requirements	Page 8
Information for Students, Parents and Guardians	Page 9
VETDSS Higher Level Qualifications	Page 11
Pre-Apprenticeship in Schools (PAiS)	Page 27
VETDSS Certificate II Qualifications	Page 39
Contact	Back Page

WHOEVER YOU WANT TO BE.

Ask yourself:

1. What am I passionate about?
2. What are my strengths?
3. What careers will allow me to follow my passion and develop my strengths?
4. How can I get a better understanding of different career opportunities?
5. What job opportunities will there be in the future?
6. What qualification will help me get the job I want?
7. What are my long-term goals?

We help you get to where you want to be in the future, supporting you every step of the way.

Central Regional TAFE's industry-experienced staff are dedicated to your success, helping you find a VETDSS pathway or Pre-Apprenticeship in School (PAIS) program that best suits you.

Working closely with industry partners and the community, we provide every opportunity for you to achieve your goals. This ensures our training is cutting edge, and our graduates are highly skilled and ready for tomorrow's workforce.

Did you know?

88.9% of 2022 TAFE graduates in Australia are satisfied with their training.*

Last year, 94.9% of graduate apprentices and trainees were employed after training.#

9/10 jobs predicted to be created over the next 5 years will require a post-secondary school qualification.^

*VET Student Outcomes, NCVER, 2022

#VET Student Outcomes, NCVER 2022

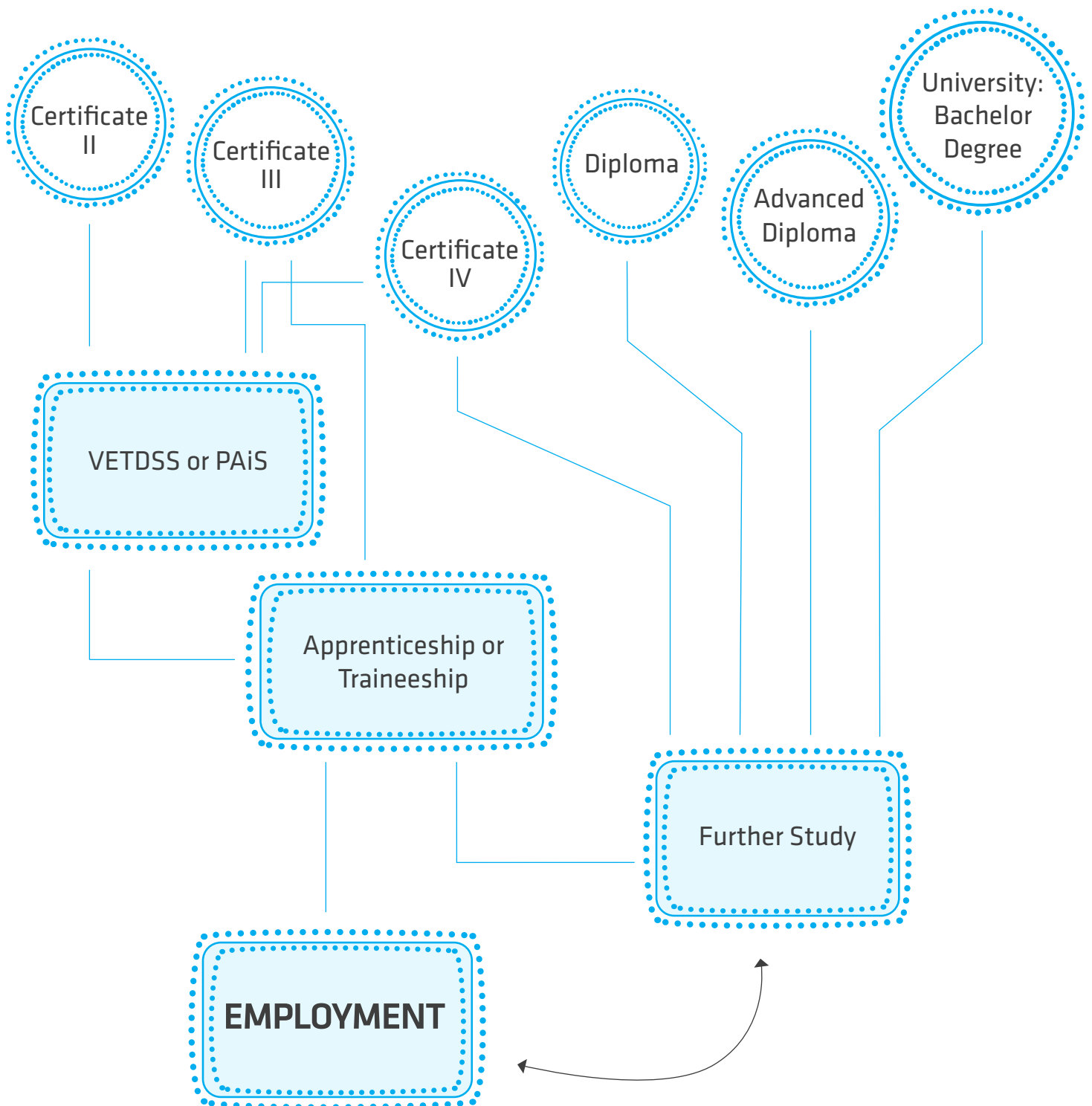
^Projecting Employment to 2026, NSC 2022

PATHWAYS

Whatever your career goal is, training at CR TAFE will help you get there, whether you are studying a Certificate, a Diploma qualification, or a Degree and beyond.

Perhaps getting an apprenticeship or traineeship is your goal? By studying a VETDSS qualification, you will have an advantage.

Even if you change your mind along the way, rest-assured the time spent completing your vocational education and training was worth it.





ABOUT VETDSS

VETDSS Pathways are the perfect introduction into the world of work.

Learn practical skills in Years 11 and 12 while gaining an insight into what to expect in the workplace.

Success in your program can lead to employment or give you a head start in other nationally recognised qualifications. Some higher-level qualifications even offer pathways into higher education and university studies.

VOCATIONAL EDUCATION AND TRAINING (VET) DELIVERED TO SECONDARY STUDENTS

VETDSS courses are designed for students who are still at high school but would like to start working or studying in a specific field. You can complete full vocational qualifications in addition to your WACE.

Vocational courses provide training options to progress into the world of work after high school, and offer a different pathway to university, apprenticeships and other higher qualifications.

For more information on how a VET qualification can be a unique and alternative pathway into university, scan the QR code below.

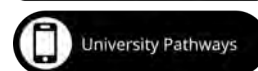
Some of our popular courses include:

- (52895WA) *Certificate IV Preparation for Health and Nursing studies*
- (BSB30120) *Certificate III in Business - a school-based Traineeship in Business, a popular way to transition into the workforce or learn valuable work-related skills.*

We work closely with regional secondary schools to offer a wide range of programs including Pre-Apprenticeships in Schools (PAiS) and higher qualifications.

PRE-APPRENTICESHIPS IN SCHOOLS (PAiS)

PAiS programs see students attend practical and theory based training at CR TAFE for two (2) days per week where they are taught by qualified lecturers. Students are also required to participate in work placement which is an excellent opportunity for them to showcase their skills and work readiness to potential employers.



If you are in Year 11 or 12, the PAiS program involves attending school, completing Certificate II Pre-Apprenticeship training at CR TAFE, and completing work placements.

There is no doubt employers look favourably at the candidate who has a proven track record of study, demonstrated the capacity to apply themselves to a formal TAFE course and understands the practices and terminology associated with the trade in question.



ENTRANCE REQUIREMENTS

FEES AND CHARGES

Secondary school students participating in a VETDSS program as part of their secondary education are exempt from course and resource fees, however, depending on the chosen course, students may be required to purchase protective clothing, uniforms, text books, USBs, student cards and equipment at their own cost.

Specific information regarding fees and charges (if required) will be outlined for each qualification.

HOW TO APPLY

A student may select the course they want to study in conjunction with their parent/guardian and School VET Coordinator, who will issue the required application form.

Applicants are required to attach:

- Copies of most recent school reports;

- Letter of application; and
- Any supporting documentation (for example, work placement reports, references, awards).

After completing the application form, ensure you and your parent/guardian sign and return the form to your School VET Coordinator.

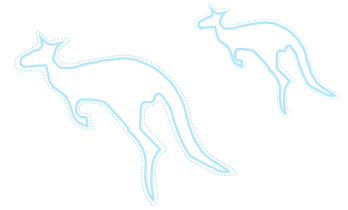
DATES

All applications for 2024 programs must be submitted via the CR TAFE website enrolment portal by Friday 1 September 2023.

An interview will be conducted shortly after to determine successful applicants for each program.

Successful students will be notified by their School VET Coordinator in Term Four and invited to attend an orientation session on campus in January 2024.

INFORMATION FOR STUDENTS, PARENTS AND GUARDIANS



INDUCTION AND ATTENDANCE

The student orientation day provides students with further information about scheduled classes, activities and a chance to meet the lecturer and have a tour around campus.

Students are responsible for ensuring their attendance in class and notifying their lecturers if they are unable to attend or running late.

Attendance is recorded and all absences are sent to parents via SMS message and communicated to the student's school on the same day. Repeated absences may result in a school being contacted regarding a student's continuation in the program.

CLASSROOM AND TAFE ENVIRONMENT

CR TAFE is an adult learning environment with a focus on developing skills and knowledge to the standard required in the workplace. This means:

- Students are responsible for their own learning and are expected to manage their workload, and seek assistance from lecturers when needed.
- Learning activities at CR TAFE are not limited to lessons in a classroom environment and may include: lectures, tutorials, online learning, work placements, assessments, research, project work, group work or workshops.
- Course hours include a wide range of delivery and assessment activities and may not always be used for classroom teaching.
- Students under 18 years of age share CR TAFE facilities such as the library, canteen, and computer labs with adult students.

- Some courses are delivered across more than one campus or involve a workplace. Parents/guardians are responsible for their child's travel arrangements to and from the campus or workplace.
- Students may be required to complete assessment tasks/assignments outside of their scheduled timetable. Some of these assessment tasks/assignments are undertaken in the community.

SUPERVISION

While attending CR TAFE, you are under the supervision of your lecturer taking the class. You will not be supervised during break times. You are expected to remain within the College grounds unless you provide your lecturer with written notification from a parent or the school that you intend to leave the College earlier than the advertised class finish time.

EXCURSIONS

CR TAFE provides parents/guardians with information on excursions prior to the event. Written parental consent will be sought for students under 18 to participate in excursions away from CR TAFE premises. If parental consent is not given, your child will not be able to attend the excursion and CR TAFE will not provide an alternative supervised activity. Students may be required to make their own way to excursions. In these situations parents/guardians will be responsible for organising transport to and from excursions.

HEALTH AND SAFETY

CR TAFE strives to provide an environment that supports the health and well-being of all students by:

- Following the relevant OSH policy, guidelines and practices.
- Providing designated first-aid officers, available to students at all campuses.
- Providing assistance and if necessary, arranging for qualified medical personnel in case of an emergency.
- Promoting a friendly and inclusive environment where bullying or any form of harassment are not accepted. Any student experiencing bullying or harassment of any kind should inform a CR TAFE staff member immediately.
- Ensuring all relevant staff have a Working with Children Check subject to the Working with Children (Criminal Record Checking) Act 2004.
- Implementing the Emergency Response Plan in case of an emergency.
- Providing parents/guardians with a copy of an Accident/Incident report if their child is seriously injured.

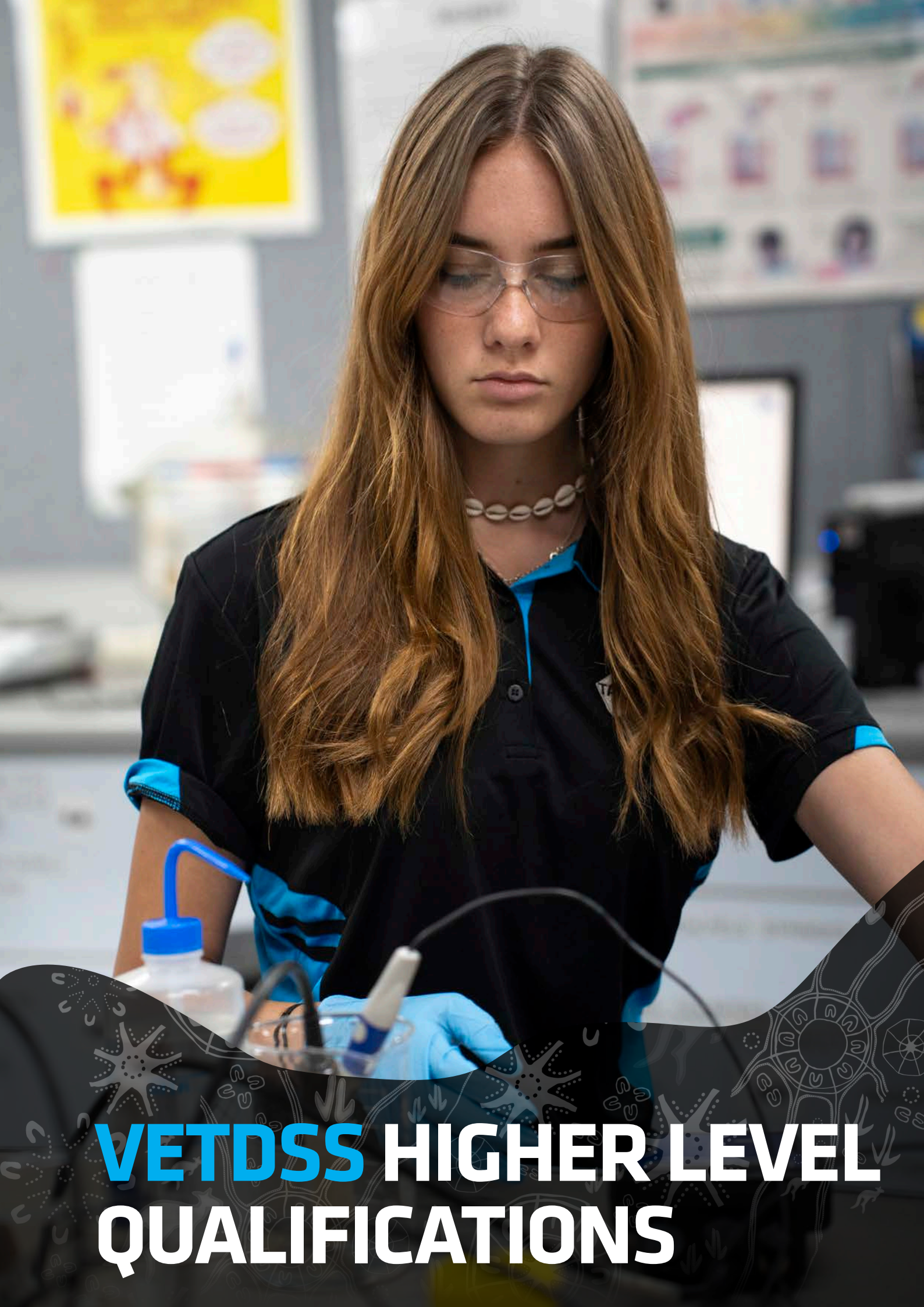
INSURANCE

Students are not covered for Personal Accident or any loss or damage to property whilst on a CR TAFE campus.

However, CR TAFE does hold cover with the Insurance Commission of WA (RiskCover) that provides Personal Accident cover for students who are undertaking unpaid work experience that is allocated or arranged by CR TAFE. Personal Accident cover is also extended to those students attending any official College camp, excursion, trip or other off campus activity (excluding sports days other than interstate sporting events, carnivals or national championships) which is approved and organised by CR TAFE.

The responsibility is placed on parents/guardians in relation to whether they arrange their own Personal Accident insurance or private health cover for their child if they believe CR TAFE coverage is not adequate.





VETDSS HIGHER LEVEL QUALIFICATIONS



VETDSS Student
Laboratory Skills
TAYLA

STAFE
Central
Regional





SCIENCE

MSL30122 | Certificate III in Laboratory Skills

If you are a budding mad scientist, then this course is for you. Learn how to perform technical tasks, including preparing and testing samples using Australian Standards.

Work both out in the field and in the laboratory and use cutting-edge testing equipment to process and record data.

This course will equip you with the knowledge and skills to perform roles such as a Laboratory or Environmental Technician

for a variety of industries, including the mining sector, pathology labs, conservation and land management, forensic labs, marine science and research institutes.

For those students looking for an alternative pathway to university, this program is an excellent and practical starting point.

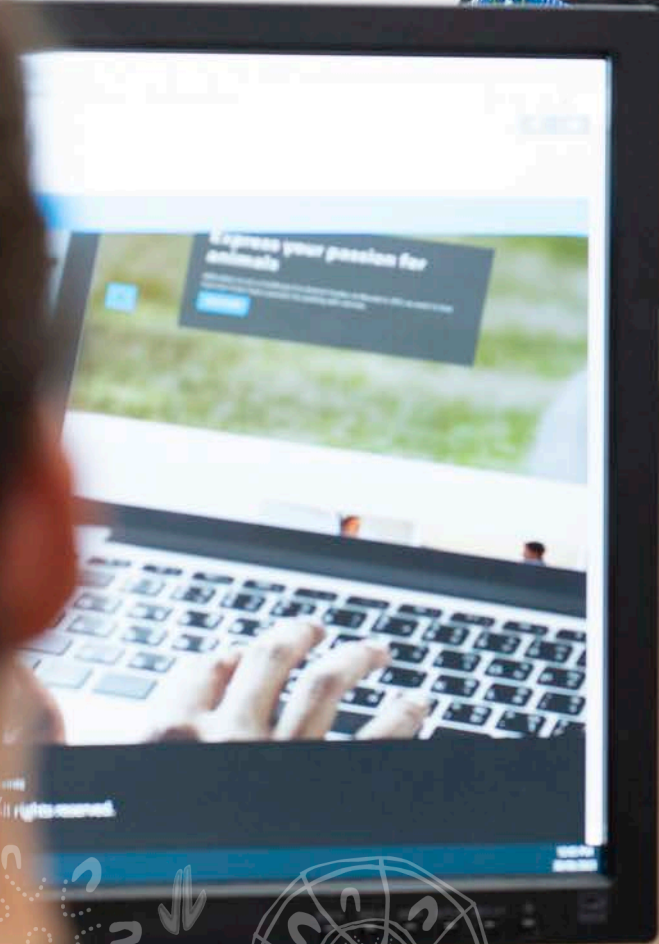
CR TAFE can offer post-school programs leading on from this qualification to help you gain entry to university with advanced standing.

COST	Uniform - \$45.00 (approx.).	DURATION	One (1) year program, one (1) day per week.
UNIFORM REQUIREMENTS	CR TAFE student polo shirt (uniform). Enclosed shoes (safety boots). Hat.	WORK PLACEMENT REQUIREMENTS	NIL.
CAREER OPPORTUNITIES	Employment outcomes targeted by this qualification include Laboratory Technicians, Environmental Technician, Instrument Operator and similar personnel.	COURSE PATHWAYS	MSL40118 Certificate IV in Laboratory Techniques. MSS40222 Certificate IV in Environmental Monitoring and Technology.

CASEY MANTICA
(OR TONY)



TAFE WA
Central
Reg
Goldfields - Western



VoiceMail
- LRI
- Enter
- Register
- To Ca

To retrieve
- LRI
- Full
You will be
the green





BSB30120 | Certificate III in
Business

Be in high demand with skills that could take you anywhere. Industry and government forecast a high demand for office workers, and with a Certificate III in Business, you will be ready to be recruited.

In this course you will learn skills and knowledge in basic MYOB, workplace organisation, customer service, workplace health and safety, desktop publishing, spreadsheets, creating electronic presentations and much more.

On completion you will be ideal for roles in

data entry, customer service, accounts or as an office clerk.

Gain skills in:

- Organising tasks
- Managing workplace information
- Producing business documents
- Delivering customer service
- Communicating effectively, and
- Fostering innovation and change.

COST	Uniform - \$45.00 (approx.).	DURATION	One (1) year program, one (1) day per week.
UNIFORM REQUIREMENTS	CR TAFE student polo shirt (uniform).	WORK PLACEMENT REQUIREMENTS	NIL.
CAREER OPPORTUNITIES	Administration Assistant, Personal Assistant, Clerical Worker, Data Entry Operator, Information Desk Clerk, Office Junior Receptionist.	COURSE PATHWAYS	BSB40120 Certificate IV in Business.





VISUAL ARTS

CUA31120 | Certificate III in Visual Arts

Is working in the Arts your dream? Do you want to follow a study pathway directly into a visual arts degree?

In this qualification, you will learn how to use a range of skills and techniques to develop your ideas and create artwork.

Successful completion enables progression directly into the (CUA51115) Diploma of Visual Arts offered at CR TAFE.

With a diploma, you can choose to study at an Advanced Diploma level at CR TAFE or have a direct study pathway to a degree in Visual Arts at Edith Cowan University.

This is an alternative to an ATAR pathway for students to obtain a degree in the creative arts industry.

COST	NIL.	DURATION	One (1) year program, one (1) day per week.
UNIFORM REQUIREMENTS	Enclosed shoes. Apron.	WORK PLACEMENT REQUIREMENTS	NIL.
CAREER OPPORTUNITIES	Art Practitioner, Art Gallery Technician, Art Technician. The Visual Arts offers employment in a variety of settings including schools, technical colleges, universities, galleries, shop-fronts, privately operated creative industries, home businesses and community precincts.	COURSE PATHWAYS	CUA41320 Certificate IV in Visual Arts. CUA51120 Diploma of Visual Arts. CUA60720 Advanced Diploma of Visual Arts.



EDUCATION

CHC30121 | Certificate III in **Early Childhood Education and Care**

If you are looking to work in the exciting and rewarding children's services industry, then this nationally accredited qualification is for you.

This qualification will give you industry exposure and a strong theoretical and practical foundation, ensuring you achieve the high levels of professionalism needed to excel in the childcare industry.

Gain skills in caring for children, applying health and hygiene principles, understanding legal and ethical requirements, providing nutritional needs for babies and children, developing and implementing play experiences, understanding child development stages, working with families and working effectively in a team environment.

Upon completion of Certificate III in Early Childhood Education and Care, you will be eligible to enrol into the (CHC50121) Diploma of Early Childhood Education and Care. This program is also an alternative pathway to university.





<p>COST</p>	<p>Texts: Birth to Big School 4th Ed. - Working in Children's Services, Karen Kearns.</p> <p>The Big Picture 4th Ed. - Working in Children's Services, Karen Kearns.</p> <p>\$150.00 (approx. for the set of two).</p> <p>Uniform - \$45.00 (approx.).</p> <p>First Aid Certificate - \$50.00.</p>	<p>DURATION</p>	<p>Two (2) year program, two (2) days per week.</p> <p>One (1) day work placement.</p> <p>One (1) day at CR TAFE.</p>
<p>UNIFORM REQUIREMENTS</p>	<p>CR TAFE student polo shirt (uniform).</p>	<p>WORK PLACEMENT REQUIREMENTS</p>	<p>Throughout the duration of the course students will be required to attend one (1) day a week of placement at an Early Childhood Education and Care Service. 160 hours required.</p>
<p>CAREER OPPORTUNITIES</p>	<p>Successful completion of this qualification provides you with the opportunity to become a Childhood Educator, Childcare Assistant, Nanny or Family Day Carer.</p>	<p>COURSE PATHWAYS</p>	<p>CHC50121 Diploma of Early Childhood Education and Care.</p>



HELLO!

EDSS Student
Early Childhood
Education and Care
LEVEL 1

TAFE
Central
Regional





EDUCATION

CHC30221 | Certificate III in School Based Education Support

This course will provide you with a customised program in learning support to prepare you for roles such as an education assistant working in a school. You will learn to provide support to a classroom teacher for children from kindergarten to Year 12.

As part of this qualification you will undertake a supervised work placement where you will be able to apply the skills and knowledge you have learned in a classroom setting.

Certificate III in School Based Education Support students are required to obtain a Working with Children Check and a Nationally Coordinated

Criminal History Check before attending work placement.

During this course you will learn how to:

- Implement planned education programs
- Assist students in their learning and development
- Contribute to the safety and health of students
- Support students with additional needs
- Work effectively with culturally diverse students and colleagues.

COST	Uniform - \$45.00 (approx.).	DURATION	Two (2) year program, two (2) days per week.
UNIFORM REQUIREMENTS	CR TAFE student polo shirt (uniform). Enclosed shoes.	WORK PLACEMENT REQUIREMENTS	Minimum 100 hours.
CAREER OPPORTUNITIES	Successful completion of this qualification provides you with the opportunity to become an education support assistant working with students in mainstream classrooms and students with additional needs.	COURSE PATHWAYS	CHC40221 Certificate IV in School Based Education Support.



ALLIED HEALTH

HLT33015 | Certificate III in Allied Health Assistance

Does a future in health services interest you? Join this growing sector and assist allied health professionals. Specialisation areas include dietetics, occupational therapy, physiotherapy, speech therapy, or podiatry services.

This qualification also equips you with the communications skills to work in health and community services.

Learn skills in:

- How to recognise healthy body systems
- Interpret and apply medical technology
- Assist with an Allied Health Program.

Some vaccinations may be required depending on your placement agency. For example, Influenza vaccination plus other vaccinations or screening as required.

COST	Uniform - \$45.00 (approx.).	DURATION	Two (2) year program, one (1) day per week.
UNIFORM REQUIREMENTS	CR TAFE student polo shirt (uniform).	WORK PLACEMENT REQUIREMENTS	120 hours.
CAREER OPPORTUNITIES	Nursing Support Worker, Personal Care Assistant.	COURSE PATHWAYS	HLT54121 Diploma of Nursing. HLT43021 Certificate IV in Allied Health Assistance, Physiotherapy/ Occupational Therapy.



52895WA | Certificate IV in
Preparation for Health and Nursing Studies

This course is designed to give students wanting to enter a nursing and health program a competitive edge.

Gain the knowledge and skills to transition into studying at a Diploma level in the future. This course will develop your knowledge in anatomy and physiology, microbiology, medical terminology, applied mathematics, physics and chemistry.

Upon completion, you will be eligible for entry into (HLT54121) Diploma of Nursing and other health programs.

Please note: there are additional requirements for entrance into the (HLT54121) Diploma of Nursing qualification. Refer to the course information for the Diploma of Nursing for more information.

COST	Uniform \$45.00 (approx.).	DURATION	One and a half (1.5) years in duration / One (1) day per week (finishing Term Two 2024).
UNIFORM REQUIREMENTS	CR TAFE student polo shirt (uniform).	WORK PLACEMENT REQUIREMENTS	NIL.
CAREER OPPORTUNITIES	Prepare for a career in health or nursing related occupations (after further study).	COURSE PATHWAYS	HLT54121 Diploma of Nursing. HLT52021 Diploma of Remedial Massage. Bachelor of Nursing (Registered Nursing).



INFORMATION TECHNOLOGY

ICT30120 | Certificate III in Information Technology

Information technology is one of the fastest-growing sectors in today's society, and there is a high demand for skills across business, government and more.

In this course, you will sample a broad range of IT areas, from commonly used hardware and software to creating a website and 2D animation and 3D modelling.

Gain skills in:

- Software applications such as Adobe Photoshop, Animate and Dreamweaver and Autodesk's 3DS Max
- Web development (HTML & CSS)
- Introductory programming (JavaScript)
- Basic cyber security procedures and techniques
- Providing technical support.

COST	Uniform - \$45.00 (approx.).	DURATION	Two (2) year program, one (1) day per week.
UNIFORM REQUIREMENTS	CR TAFE student polo shirt (uniform). Enclosed shoes.	WORK PLACEMENT REQUIREMENTS	NIL.
CAREER OPPORTUNITIES	Network Administration, Network Technician, Network Support.	COURSE PATHWAYS	ICT40120 Certificate IV in Information Technology . ICT50220 Diploma of Information Technology.



MEDIA STUDIES

CUA31020 | Certificate III in Screen and Media

Mix your own demo, present live on air, or film and edit your own masterpiece. This qualification is the perfect platform to kick-start your career in the media industry.

Use industry-standard equipment and software to learn and develop media skills, including the basics of sound recording and editing, video production, post-production, and broadcast production/presentation.

Begin your journey into mastering your creativity, learning to write content for all types of media, and producing content for any platform, from Facebook to the film studio floor.

Change how you think and feel about the media, develop your critical and creative thinking skills, and open your mind to the possibilities of the media industry.

COST	Uniform - \$45.00 (approx.).	DURATION	One (1) year program, one (1) day per week.
UNIFORM REQUIREMENTS	CR TAFE student polo shirt (uniform). Enclosed shoes.	WORK PLACEMENT REQUIREMENTS	NIL.
CAREER OPPORTUNITIES	Traineeship in Broadcasting, Traineeship in Multimedia, Traineeship in Screen, Archival Media Technician, Camera/Lighting Assistant, Community Radio Program Maker/Presenter, Editing Assistant, Interactive Media Author Assistant, Production Assistant.	COURSE PATHWAYS	CUA41320 Certificate IV in Visual Arts.





**PRE-APPRENTICESHIP
IN SCHOOLS (PAIS)**



AUTOMOTIVE

AUR20520- AC33 | Certificate II in

Automotive Servicing Technology (Light Vehicle Servicing Pre-Apprenticeship)

If you want to work with cars and trucks as a career, this course is the one for you. Learn how to service engines, use and maintain workplace tools and equipment, and much more.

You will also have the opportunity to test your skills in the workplace through a Supervised Work Placement during the course.

Upon successful completion, you may look towards an Apprenticeship in a range of areas including: Motor Mechanic (Light), Heavy Duty Road Transport, Mobile Plant, Auto Electrician or Panel Beater.

Gain skills in:

- Communicating effectively
- Working in a team environment
- Planning organising and problem solving skills
- Servicing a vehicle, and
- Performing general vehicle maintenance and small repairs.



<p>COST</p>	<p>Uniform - \$TBA. Text Book- \$200.00. First Aid Certificate - \$20.00.</p>	<p>DURATION</p>	<p>One (1) year program, two (2) days per week. Currently doing three terms, but are looking at ending part way through Term Four.</p>
<p>UNIFORM REQUIREMENTS</p>	<p>Long drill trousers (navy blue) and short (or long) sleeved drill shirt (hi-vis yellow and blue). Steel capped boots that comply with Australian Safety Standards. Safety glasses (first pair supplied by CR TAFE).</p>	<p>WORK PLACEMENT REQUIREMENTS</p>	<p>220 hours (approx.).</p>
<p>CAREER OPPORTUNITIES</p>	<p>Successful completion of this qualification may lead to employment as an Apprentice Light Vehicle Mechanic, Apprentice Heavy Vehicle Mechanic, Apprentice Plant Mechanic, Apprentice Agricultural Mechanic, Apprentice Spray Painter, Apprentice Panel Beater, Apprentice Automotive Electrician.</p>	<p>COURSE PATHWAYS</p>	<p>Apprenticeship.</p>





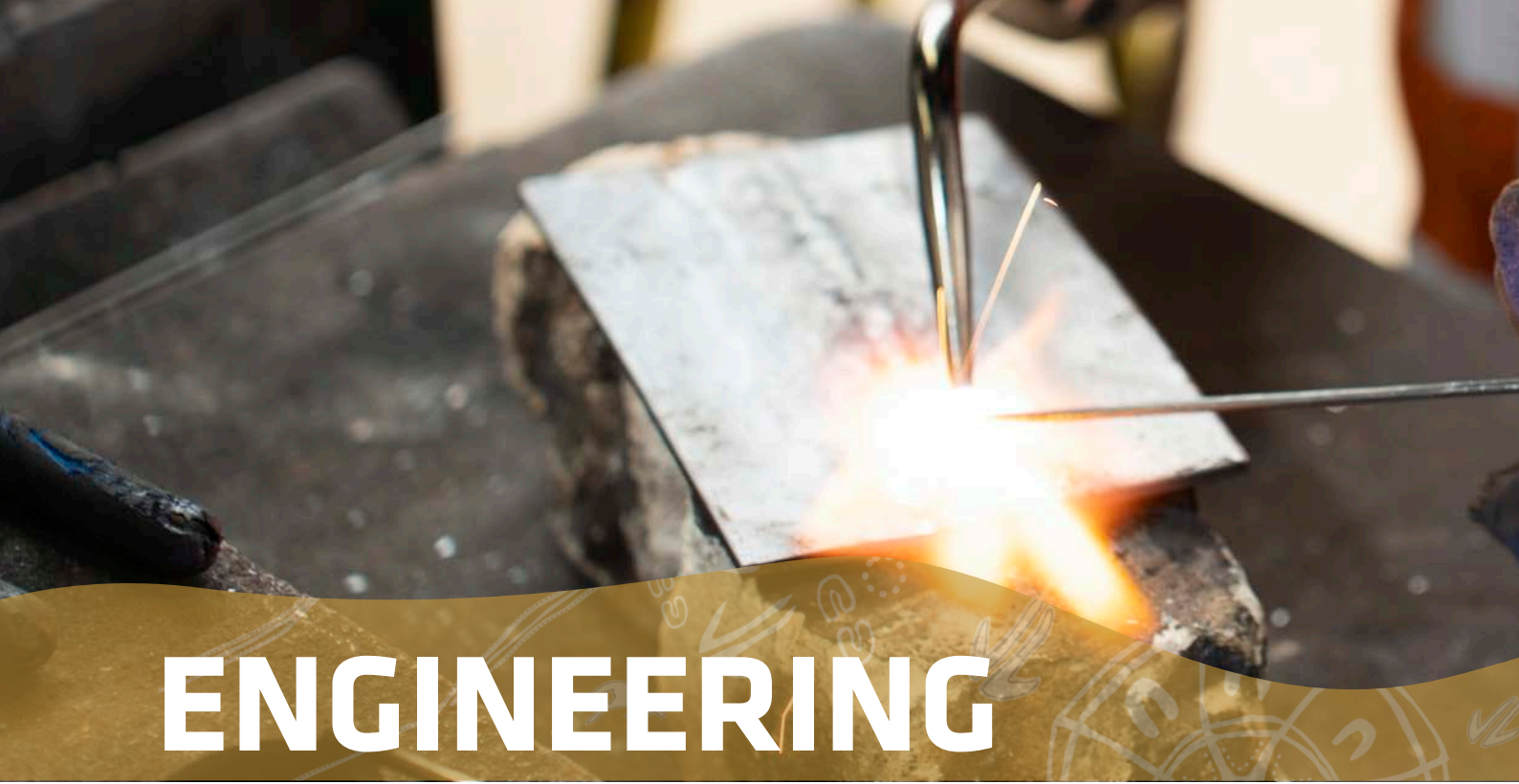
COMMERCIAL COOKERY

SIT20421 - AB10 | Certificate II in Cookery - Commercial Cookery Pre-Apprenticeship

This qualification provides a pathway to work in kitchen operations in organisations such as restaurants, hotels, catering operations, clubs, pubs, cafés, and coffee shops; and institutions such as aged care facilities, hospitals, prisons, and schools.

In this qualification you will learn basic food preparation and cookery skills, with direct supervision from industry experienced trainers.

COST	Uniform – \$150.00 (plus suitable kitchen shoes/boots). Knife. Text books - \$70.00.	DURATION	One (1) year program, two (2) days per week.
UNIFORM REQUIREMENTS	Chef jacket (with white buttons). Chef trousers (check style). White apron. Neckerchief. Chef hat. Kitchen shoes/boots.	WORK PLACEMENT REQUIREMENTS	200 hours (approx.).
CAREER OPPORTUNITIES	Breakfast Cook, Catering Assistant, Fast Food Cook, Sandwich Hand or Take-away Cook.	COURSE PATHWAYS	Apprenticeship in the Hospitality Industry. SIT30821 Certificate III Commercial Cookery. SIT31021 Certificate III in Patisserie.



ENGINEERING

MEM20105 - AA50 | Certificate II in

Engineering - Pre-Apprenticeship Heavy Fabrication

If you are looking for a trade with many different employment opportunities, this qualification is a fantastic starting point. You will learn mechanical cutting, thermal cutting, gouging and welding.

After successful completion of this qualification, you may choose to become a trade assistant or progress to an Apprenticeship in a wide variety of fields, including; Fabrication - Heavy (Boilermaker); Light (Sheetmetal); Welder or Heavy/Welder and Fitting and Machining.

This qualification provides practical skills and knowledge in a range of metals and engineering industry areas. You will also learn about safety in the workplace, computing and maths and practice the skills you have learned in a workshop environment. The skills packaging for the qualification has been designed on the assumption that competency will be developed through a combination of practical and on the tools learning, such as those delivered through a formal traineeship.

This course is an excellent opportunity to experience an insight into becoming a Fabricator or Fitter and Machinist.

Units completed may assist you in gaining employment as an apprentice.

Gain skills in:

- Using tools
- Measuring and calculating
- Technical drawing and drafting
- Load shifting
- Thermal cutting
- Using forging and casting equipment
- Welding.



COST	<p>Text books - \$150.00 (approx.).</p> <p>Uniform - \$TBA.</p> <p>First Aid Certificate - \$50.00.</p>	DURATION	<p>One (1) year program, two (2) days per week.</p>
UNIFORM REQUIREMENTS	<p>Long drill trousers (navy blue) and hi vis drill shirt (blue).</p> <p>Steel capped boots that comply with Australian Safety Standards.</p> <p>Safety glasses (first pair provided).</p>	WORK PLACEMENT REQUIREMENTS	<p>120 hours (approx.).</p>
CAREER OPPORTUNITIES	<p>Successful completion of this qualification provides you with the opportunity to become a Trade Assistant.</p> <p>This course is a pathway to Certificate III in Engineering which is an apprenticeship course. <i>You will need to be employed and registered as an apprentice/trainee before you can commence apprenticeship/traineeship training.</i></p>	COURSE PATHWAYS	<p>Certificate III Engineering qualifications and streams such as:</p> <p>MEM30219 Mechanical Trade.</p> <p>MEM31922 Fabrication Trade.</p> <p>Or an apprenticeship/traineeship.</p>



ENGINEERING

MEM20105 - AA49 | Certificate II in

Engineering (Mechanical Fitter and Machinist - Pre-Apprenticeship)

This course is an excellent opportunity to experience an insight into becoming a Fabricator or Fitter and Machinist.

After successful completion of this qualification, you may choose to become a trade assistant or progress to an Apprenticeship in a wide variety of fields, including; Fabrication - Heavy (Boilermaker); Light (Sheetmetal); Welder or Heavy/Welder and Fitting and Machining.

This qualification provides practical skills and knowledge in a range of metals and engineering industry areas. You will also learn about safety in the workplace, computing and maths and practice the skills you have learned in a workshop environment.

The skills packaging for the qualification has been designed on the assumption that competency will be developed through a combination of hands-on and classroom learning, such as those delivered through a formal traineeship.

Units completed may assist you in gaining employment as an apprentice.

Gain skills in:

- Using tools
- Measuring and calculating
- Technical drawing and drafting
- Load shifting
- Thermal cutting
- Using forging and casting equipment
- Welding.



COST	TBC.	DURATION	One (1) year program, two (2) days per week.
UNIFORM REQUIREMENTS	Long drill trousers (navy blue) and hi vis drill shirt (navy blue). Steel capped boots that comply with Australian Safety Standards.	WORK PLACEMENT REQUIREMENTS	120 hours (approx.).
CAREER OPPORTUNITIES	Successful completion of this qualification provides you with the opportunity to be employed in industries such as In industries such as rail transport infrastructure and maintenance, mining, automotive, or hydraulics.	COURSE PATHWAYS	Certificate III Engineering qualifications and streams such as: MEM30219 Mechanical Trade.



ELECTROTECHNOLOGY

UEE22020 - AC54 | Certificate II in

Electrotechnology (Career Start) Pre-Apprenticeship

An Electrotechnology Pre-Apprenticeship provides the skills employers are looking for as an apprentice in the electrical, instrumentation or electrical servicing trades.

You will gain the knowledge and practical skills to work effectively in the construction industry, use hand and power tools, interpret drawings, take electrical and electronic measurements and soldering components.

Gain skills in basic electrical tasks such as:

- Basic electrical maintenance, such as attaching wall mounted electrical outlets
- Using hand and power tools
- Solving problems in DC circuits
- Working safely in an electrical workplace.

COST	Basic tool kit - \$145 (approx). Uniform - \$TBA. First Aid Certificate - \$50.00. Training Electrical Licence \$80.00.	DURATION	One (1) semester, two (2) days per week.
UNIFORM REQUIREMENTS	Long or short drill trousers (navy blue) and short (or long) sleeved drill shirt (navy blue). Steel capped boots that comply with Australian Safety Standards Safety glasses (first pair provided).	WORK PLACEMENT REQUIREMENTS	160 hours (approx.).
CAREER OPPORTUNITIES	Successful completion of this qualification provides you with the opportunity to gain an apprenticeship in the Electrical trade and other trades within the building and construction industry.	COURSE PATHWAYS	UEE30820 Certificate III Electrotechnology Electrician. Traineeship/Apprenticeship.



PLUMBING

52887WA - AC56 | Certificate II in Plumbing - Pre-Apprenticeship

Tap into your future. Plumbing is one of the top three occupations in the construction industry, with both general and specialised plumbers in demand. Build the basic skills and knowledge you need to start your plumbing career.

This entry-level course will put you on the path to gaining an apprenticeship in plumbing, and is only offered through the Pre-Apprenticeship in Schools (PAiS) program. This course is an

excellent opportunity to gain the skills to impress possible future employers.

Personal Requirements:

- Enjoys practical work
- Ability to cope with the physical demands of the job
- Ability to work with your hands.

COST	Text Books- \$95.00 (approx). Uniform - \$TBA. First Aid Certificate - \$50.00.	DURATION	Three (3) term program, two (2) days per week.
UNIFORM REQUIREMENTS	Long or short drill trousers (green) and long sleeved drill shirt (green). Steel capped boots that comply with Australian Safety Standards. Safety glasses (first pair provided).	WORK PLACEMENT REQUIREMENTS	120 hours (approx.).
CAREER OPPORTUNITIES	On completion of this course, you may be able to specialise in different areas of plumbing including: Domestic Plumber, Industrial Plumber, Gasfitter, Mechanical Services Plumber, Roof Plumber, Sprinkler Fitter.	COURSE PATHWAYS	CPC32420 Certificate III in Plumbing. CPC30220 Certificate III in Carpentry.



Student
Studies
RANIA





VETDSS Student
Animal Studies
ELLA

TAFE WA
Central
Regional

VETDSS CERTIFICATE II
QUALIFICATIONS



ANIMAL STUDIES

ACM20121 | Certificate II in **Animal Studies**

Do you have a passion for animals? Would you like to work with our furry and feathered friends?

You will learn about caring for all types of animals by catering for nutritional needs, basic animal care and handling, and first aid.

A Certificate II in Animal Studies offers an opportunity to practice skills in the TAFE Animal Surgery.

Gain skills and knowledge in:

- Learning fundamental animal care and handling methods
- Developing team-work, communication and problem-solving skills
- Catering for animal nutritional needs
- Providing basic first aid to animals
- Assisting with animal health care
- Developing self-management and organisational techniques
- Working with teams of people who are willing to help make a difference to the

lives of our animal companions

- Handling animals safely and confidently in a range of situations
- Dealing with emergencies
- Observing, monitoring and recognising health issues in animals
- Being able to assist in treating diseases and illness.

This course involves some physical work. Students must be prepared to work outdoors and deal with dirty, smelly situations.

Personal requirements are:

- Being passionate about animals and their welfare
- Good communication skills and enjoying working with people
- Confidence and patience when working with animals
- An ability to undertake manual and sometimes heavy work
- Being observant and methodical.



COST	Uniform - \$45.00 (approx.).
UNIFORM REQUIREMENTS	CR TAFE student polo shirt. Enclosed (non-slip) shoes. Suitable clothing and hat for regular field activities.
CAREER OPPORTUNITIES	Animal Care Attendant, Pet Shop Employee, Cattery Attendant, Kennel Hand, Animal Handler, Animal Shelter Worker.
DURATION	One (1) year program, one (1) day per week.
WORK PLACEMENT REQUIREMENTS	NIL.
COURSE PATHWAYS	ACM30122 Certificate III in Animal Care Services.





CALM

AHC21020 | Certificate II in

Conservation and Ecosystem Management

This qualification will provide you with the practical skills and knowledge to gain employment in the conservation and ecosystem management industry, including gardening, nursery work and landscaping, plus parks and gardens management.

Working in the Conservation and Land Management industry is for people who love to

work in the outdoor environment and recognise the value of restoring natural bushland and coastal areas.

Develop skills in natural resource management, land management, min site rehabilitation, developing and leading teams to implement conservation and land management strategies and more.

COST	Uniform - \$45.00 (approx.).	DURATION	One (1) year program, one (1) day per week.
UNIFORM REQUIREMENTS	CR TAFE student polo shirt (uniform). Enclosed shoes.	WORK PLACEMENT REQUIREMENTS	NIL.
CAREER OPPORTUNITIES	School Gardeners, Nursery Worker, Council Gardeners, Landscaper, and Private Contract Gardeners.	COURSE PATHWAYS	AHC31421 Cert III in Conservation and Ecosystem Management . AHC40920 Cert IV in Conservation and Ecosystem Management. AHC51120 Diploma of Conservation and Ecosystem Management. Bachelor of Environmental Science.



HORTICULTURE

AHC20416 | Certificate II in

Horticulture

Be a part of the new food revolution and vibrant industry that will feed the world. This qualification provides you with the skills and knowledge you need to work within Australia's rapidly growing horticulture sector.

You will learn the latest techniques and technologies to ensure your work readiness which will help you get into a rewarding career.

This course will provide you with the practical skills and knowledge to work across a range of horticulture sectors, including aquaponics and hydroponics.

You will gain skills in:

- Safe handling and use of pesticides
- General workplace safety
- Propagation
- Tending nursery plants
- Planting and pruning
- Treating weeds, pests and diseases
- Maintaining garden beds and irrigation
- Using a range of horticultural equipment.

COST	Uniform - \$45.00 (approx.).	DURATION	One (1) year program, one (1) day per week.
UNIFORM REQUIREMENTS	CR TAFE student polo shirt (uniform). Enclosed shoes.	WORK PLACEMENT REQUIREMENTS	NIL.
CAREER OPPORTUNITIES	Successful completion of this qualification provides you with the opportunity to become a Horticulture Worker/Assistant in parks and gardens, nurseries and landscaping businesses.	COURSE PATHWAYS	AHC30722 Certificate III in Horticulture. AHC40422 Certificate IV in Horticulture.



RURAL OPERATIONS

AHC21216 | Certificate II in Rural Operations

This entry-level qualification is great for those wanting to try their hand at a range of skills useful in the Agriculture industry and beyond. providing you with the basic skills to work across rural and regional Australia.

You will gain practical skills to work safely on rural worksites and carry out a range of manual tasks, including how to operate machinery and safely use manual and power tools.

Learn skills in:

- Fencing
- Machinery Operations
- Land and Ecosystem management
- How to maintain structures and property
- Horticultural operations
- The correct use of hand tools.

COST	NIL.	DURATION	One (1) year program, one (1) day per week.
UNIFORM REQUIREMENTS	Work shirt. Drill work trousers. Steel capped boots.	WORK PLACEMENT REQUIREMENTS	NIL.
CAREER OPPORTUNITIES	Successful completion of this qualification can lead you to an exciting path from stockman/farmhand to station/farm manager.	COURSE PATHWAYS	AHC30722 Certificate III in Horticulture. AHC30122 Certificate III in Agriculture. AHC40422 Certificate IV in Agriculture.





BUILDING & CONSTRUCTION

52893WA | Certificate II in

Building and Construction (Pathway-Trades)

When you complete a Certificate II in Building and Construction (Pathway-Trades), you can seek an apprenticeship in the building and construction industry in your chosen trade stream and gain credit towards an apprenticeship for completed subjects.

The first stage of the course has units common to several construction trades, providing a great introduction to the industry, its culture, occupations, job roles and workplace expectations.

The elective units of competency are carpentry based, covering Occupational Health and

Safety requirements, the industrial and work organisation structure, communication skills, work planning, and the basic use of tools and materials. You will gain full industry experience whilst on work placement.

Develop skills in:

- General construction techniques
- Working as part of a team
- Work safely in the construction industry
- Using a variety of construction tools and equipment.

COST	Text books- \$130.00 (approx). Uniform - \$TBA. First Aid Certificate - \$50.00.	DURATION	One (1) year program, two (2) days per week.
UNIFORM REQUIREMENTS	Steel capped boots that comply with Australian Safety Standards. Safety glasses (first pair supplied by CR TAFE).	WORK PLACEMENT REQUIREMENTS	110 hours (approx.).
CAREER OPPORTUNITIES	On completion of this course, you may be able to seek an apprenticeship in the construction industry.	COURSE PATHWAYS	Apprenticeship in the construction industry Certificate III qualifications in the construction industry.



COMMUNITY SERVICES

CHC22015 | Certificate II in

Community Services

Do you have a passion for working with those in need and making a positive impact? Community service workers provide support to individuals, groups and communities and work with them to identify what social, emotional, psychological, practical and other supports they may need to face life's difficulties and challenges.

They encourage and assist people to access services and advocate for social justice. Community service workers have a powerful impact on the lives of individuals and on the way our society deals with social changes, challenges and issues.

This qualification may be a pathway into the workforce, which currently is a growth area. It can also be a step into further studies such as aged care, community, disability, youth or home and community care.

You will be prepared to work in roles where you will:

- Support individuals by providing a first point of contact in a crisis situation and

Referral to a broad range of services, or

- Work in residential facilities and/or in community services under direct or regular supervision within clearly defined organisation guidelines and service plans.

Those who work at this level:

- May provide assistance and support to clients accessing a service or experiencing issues such as alcohol and/or other drug issues
- Assist people in meeting their immediate needs e.g. by providing shelter and food
- Provide short-term contact with clients in a crisis situation during which time they establish a helping relationship to define the crisis and provide referral information where appropriate
- May provide ancillary services such as catering, cleaning, laundry, gardening and home maintenance
- Report directly to a supervisor and are not responsible for other workers.



COST	Uniform - \$45.00 (approx.).	DURATION	One (1) year, one (1) day per week.
UNIFORM REQUIREMENTS	CR TAFE student polo shirt (uniform).	WORK PLACEMENT REQUIREMENTS	Throughout the duration of the course students will be required to attend one day a week of placement. Minimum of 40 hours are required.
CAREER OPPORTUNITIES	Successful completion of this qualification provides you with the opportunity to become an Assistant Community Services Worker, Personal Care Assistant, Front Desk Officer / Receptionist, Support Worker, Youth Worker or a Residential Support Worker.	COURSE PATHWAYS	CHC32015 Certificate III in Community Services. CHC33021 Certificate III in Individual Support.



52845WA | Certificate II in

Autonomous Workplace Operations

This course has been developed in partnership with Rio Tinto with the aim to provide students with the skills and knowledge to work in a range of automated workplaces.

Students will learn how automation has evolved within the industry and the general community and finish the course with an in-depth understanding of current and future job opportunities within autonomous operations.

Individuals will work within CR TAFE's autonomous simulation and be involved in all parts of the operation within this environment. As part of their training, students will have the opportunity to visit several sites throughout

the Midwest region to see autonomous operations in action. They will also have face to face and online interaction with Rio Tinto staff who are currently working within autonomous operations.

Gain skills and knowledge in:

- Working with autonomous plants, equipment and systems
- Using a variety of technologies used to operate autonomous equipment
- Communicate within autonomous operations.

COST	Hi-vis uniform - \$45.00 (approx.).	DURATION	One (1) year program, one (1) day per week.
UNIFORM REQUIREMENTS	CR TAFE student hi-vis shirt (uniform). Enclosed (non-slip) shoes.	WORK PLACEMENT REQUIREMENTS	NIL.
CAREER OPPORTUNITIES	Successful completion of this qualification provides you with the opportunity to work in the mining and manufacturing industries.	COURSE PATHWAYS	Certificate III qualifications in the mining and manufacturing industries. Students can go on to study specialised fields in mining and manufacturing.



RESOURCES

RII20120 | Certificate II in

Resources and Infrastructure Work Preparations

This broad qualification will give you practical foundation skills you need to carry out a range of basic tasks in the resource and infrastructure sectors, such as mining and mineral exploration, drilling, petroleum exploration and construction.

This course focuses on site safety, communication and teamwork and a variety of skills that will launch you into further study or even an apprenticeship or traineeship.

You will gain knowledge and skills in:

- Complying with site rules and procedures
- Performing measurements and calculations
- Operating equipment
- Using hand and power tools
- Welding and cutting
- Operational maintenance.

COST	Hi-vis uniform - \$45.00 (approx.).	DURATION	One (1) year program, one (1) day per week.
UNIFORM REQUIREMENTS	CR TAFE student hi-vis shirt (uniform). Long drill trousers. Steel capped boots that comply with Australian standards.	WORK PLACEMENT REQUIREMENTS	NIL.
CAREER OPPORTUNITIES	Construction site assistant. Workshop assistant. Civil Construction assistant.	COURSE PATHWAYS	RII30820 Certificate III in Civil Construction Plant Operations. Trades apprenticeship.



BEAUTY

SHB20121 | Certificate II in Retail Cosmetics

Do you have a flair for makeup? Learn more and work in an exciting industry where you can meet new people and help build their confidence whilst doing something you enjoy.

You will develop skills and knowledge to sell, demonstrate and apply cosmetic products to industry standards. You will

have hands-on experience in a variety of beauty and makeup techniques. You will gain the skills needed to work in a cosmetic retail environment, including beauty and hairdressing salons, retail outlets and department stores or prepare to work as a freelance makeup artist in the future.

COST	Make-up kit \$90.00. Make-up brush set \$90.00. Textbooks (Skin Deep) \$150.00. Photographer fee \$100.00. Uniform - Tunic Top \$75.00 (approx.).	DURATION	One (1) year program, Two (2) days per week.
UNIFORM REQUIREMENTS	Tunic Top. Black pants.	WORK PLACEMENT REQUIREMENTS	NIL.
CAREER OPPORTUNITIES	Successful completion provides opportunities to work in a hairdressing or beauty salon, retail outlet or department store.	COURSE PATHWAYS	SHB30221 Certificate III in Make-up. SHB30121 Certificate III in Beauty Services . SHB40121 Certificate IV in Beauty Therapy . CUA51020 Diploma of Screen and Media - Specialist Make-up Services.



HAIRDRESSING

SHB20216 | Certificate II in Salon Assistant

When you complete the Certificate II in Salon Assistant, you will have the skills to impress potential employers as a Salon Assistant and be on your way to becoming a hairdresser or barber.

Gain knowledge and skills in:

- Supporting hairdressers in a salon
- Shampooing, colouring and braiding hair

- Maintaining hairdressing tools
- Scheduling appointments
- Merchandising
- Workplace health and safety
- Gaining the skills in designing and applying makeup.

COST	Uniform - Tunic Top \$75.00 (approx.).	DURATION	One (1) year program, one (1) day per week.
UNIFORM REQUIREMENTS	Tunic Top . Long Black Trousers (ankle length). Black enclosed shoes.	WORK PLACEMENT REQUIREMENTS	NIL.
CAREER OPPORTUNITIES	Successful completion of the Salon Assistant provides a stepping stone into a Hairdressing/Barbering Apprenticeship or possible entry into the Certificate IV in Beauty Therapy.	COURSE PATHWAYS	SHB30416 Certificate III in Hairdressing – Apprenticeship pathway. SHB30516 Certificate III in Barbering – Apprenticeship pathway. SHB40121 Certificate IV in Beauty Therapy.



VEDSS Student
Hospitality
SHAY

TAFE
Western Australia





HOSPITALITY

SIT20322 | Certificate II in Hospitality

Do you want to travel? Do you need a part-time job whilst you study? If you answered “yes”, this qualification could help you.

Upon successful completion of this qualification, you will gain invaluable knowledge and experience such as barista skills, hospitality, bar skills, restaurant service skills, customer service and events management.

A Certificate II in Hospitality will assist you to find work in places such as restaurants, hotels, motels, clubs, pubs, cafés and coffee shops.

COST	Uniform - \$45.00 (approx.).	DURATION	One (1) year program, one (1) day per week.
UNIFORM REQUIREMENTS	Black CR TAFE work shirt (supplied). Black trousers or business skirt (worn with stockings). Black enclosed shoes.	WORK PLACEMENT REQUIREMENTS	NIL.
CAREER OPPORTUNITIES	Café Attendant, Catering Assistant, Bar Attendant, Front Office Assistant.	COURSE PATHWAYS	SIT30622 Certificate III in Hospitality. SIT30522 Certificate III in Events. SIT30821 Certificate III in Commercial Cookery.



MARITIME

SFI20219 | Certificate II in Fishing Operations

Would you like to work on the ocean?

This qualification will provide you with the practical skills and knowledge to work as a deckhand on commercial fishing vessels, ferries or a dive charter vessel.

You will complete a broad range of tasks that may include maintaining fishing gear, operating small vessels, using deck equipment, processing and basic marine science skills.

This qualification provides the main entry point for individuals working in the fishing sector of the seafood industry.

Gain knowledge and skills in:

- Assisting with operation of fishing gear and equipment
- Basic processing and temperature control of harvest
- General cleaning and maintenance of equipment and vessel
- Handling, harvesting and sorting bycatch (incidental capture of non-target species).

COST	Uniform - \$45.00 (approx.).
UNIFORM REQUIREMENTS	CR TAFE student polo shirt (uniform). Enclosed (non-slip) shoes. Suitable clothing and hat for regular field and boating activities.
CAREER OPPORTUNITIES	Further study may lead to employment opportunities as a fisher or general purpose hand on a fishing vessel, charter boat or on an aquaculture vessel.
DURATION	One (1) year program, one (1) day a week.
WORK PLACEMENT REQUIREMENTS	NIL.
COURSE / STUDY PATHWAYS	SFI30219 Certificate III in Fishing Operations . SFI30119 Certificate III in Aquaculture.



AQUACULTURE

SFI20119 | Certificate II in
Aquaculture

Do you enjoy working with fish and other marine and freshwater species?

The Certificate II in Aquaculture provides the skills and knowledge to work in the fast-growing Aquaculture industry and Geraldton is at the heart of the Midwest aquaculture industry.

Gain the expertise to work as a field hand in an aquaculture operation such as a hatchery, sea cage or pond facility.

You will gain knowledge and skills in:

- Handling and harvesting fish and other aquaculture stock
- Collecting broodstock
- Filleting fish and handling seafood
- Measuring water quality
- Treating diseases
- Controlling fish environments.

COST	Uniform - \$45.00 (approx.).	DURATION	One (1) year program, one (1) day a week.
UNIFORM REQUIREMENTS	CR TAFE student polo shirt (uniform).	WORK PLACEMENT REQUIREMENTS	NIL.
CAREER OPPORTUNITIES	Aquaculture Field Hand or Hatchery or Nursery Assistant. Further study into Certificate III in Aquaculture may lead to opportunities as a general hand in aquaculture farms, hatcheries, processing facilities, zoos and pet stores.	COURSE PATHWAYS	SIFI30119 Certificate III in Aquaculture . MAR20321 Certificate II in Maritime Operations (Coxswain Grade 1 Near Coastal).



We can't wait to see
what you achieve!



For more information about Central Regional TAFE's VETDSS programs, please contact:

Coordinator Education & Training Programs
VETDSS@crtafe.wa.edu.au



RTO 52789 | V.1

1800 672 700 | centralregionaltafe.wa.edu.au | info@crtafe.wa.edu.au